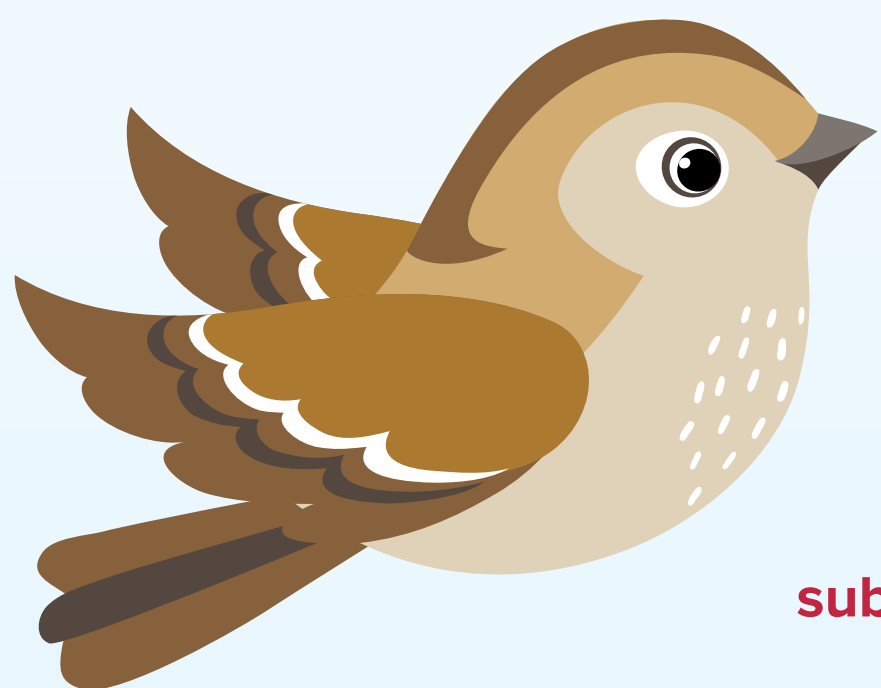


Sentence structure



Simple sentences

- Simple sentences express one idea.
- They have one clause.
- They have a subject and one complete verb.

subject *The birds* flew gracefully verb
through the deep blue sky.



Compound sentences

- Compound sentences contain two or more independent clauses, both of which make sense on their own.
- They are joined together with a coordinating conjunction, e.g. 'and', 'so' or 'but'.

independent
clauses

The birds sang in the trees **and** *the sun smiled down upon them.*

coordinating
conjunction



Complex sentences

Complex sentences contain an independent clause and one or more dependent clauses.

- An independent clause makes sense on its own.
- A dependent clause does not make sense on its own.



dependent
clause

Even though the morning was dark and dreary, the birds were singing a cheerful song.

independent
clause