

MASS

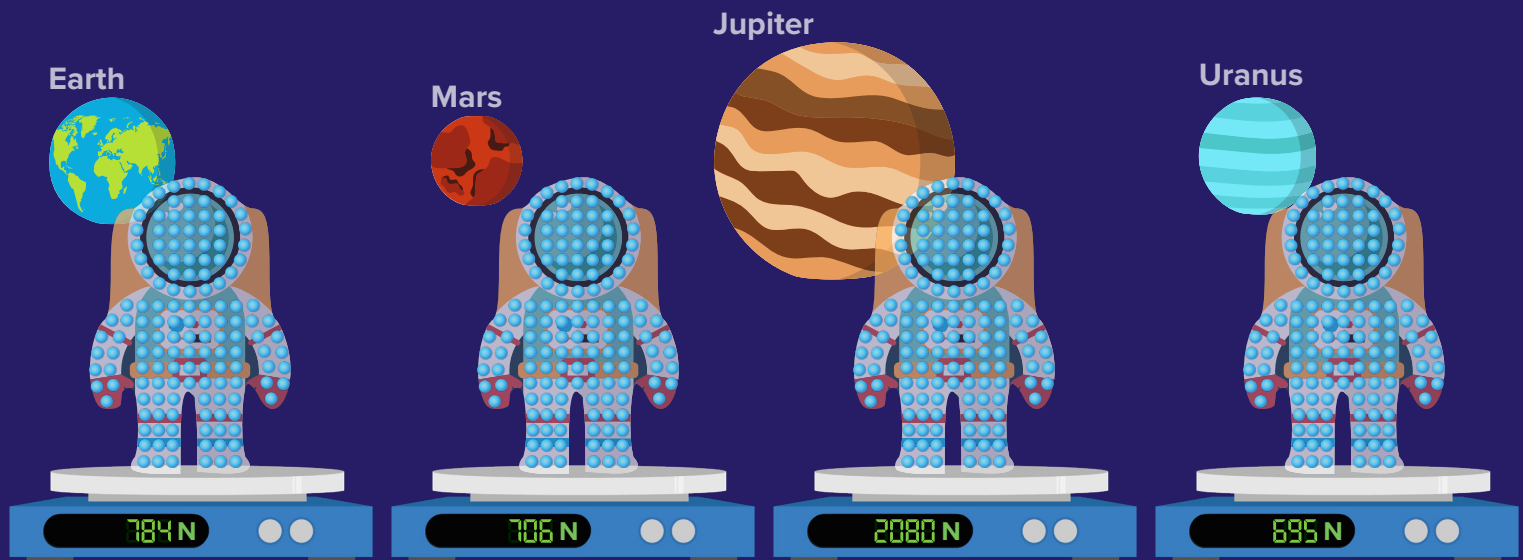
All objects contain **matter**.

Mass is the measure of how much **matter** an object contains.

Measured in **kilograms** (kg) and is a **scalar** quantity.

Mass is constant everywhere in the Universe.

The amount of matter an object has does not change.



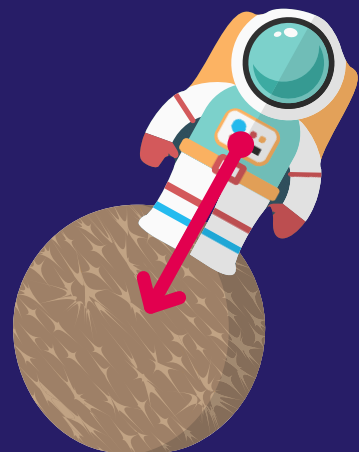
Objects have **different weights** depending on where they are in the Universe.

WEIGHT

The **force** acting on an object's mass due to gravitational attraction.

Measured in **newtons** (N) and is a **vector** quantity.

Depends on the **strength** of the gravitational field.



CENTURY