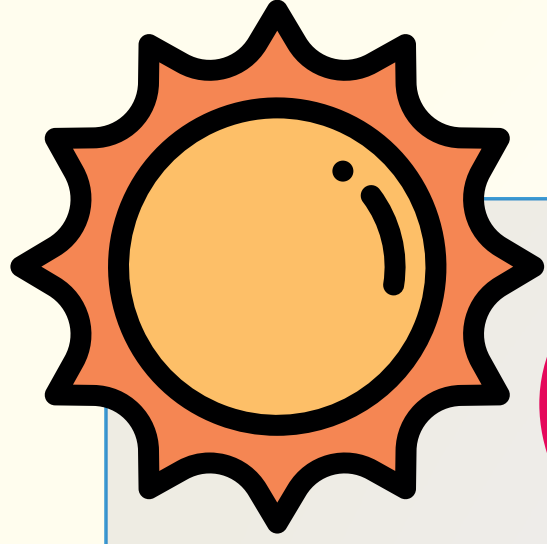


Literary devices for creative writing



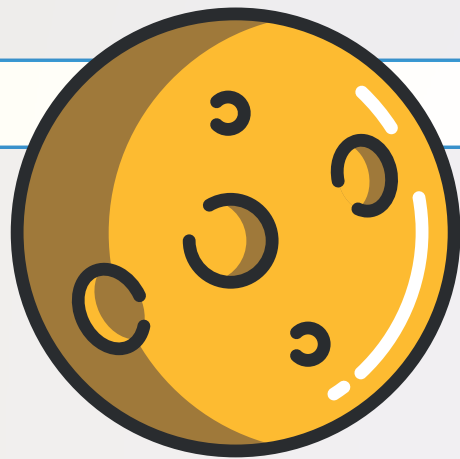
A simile is a comparison between two things using the word 'like' or 'as'.

Her smile lit up the room like a ray of sunshine.



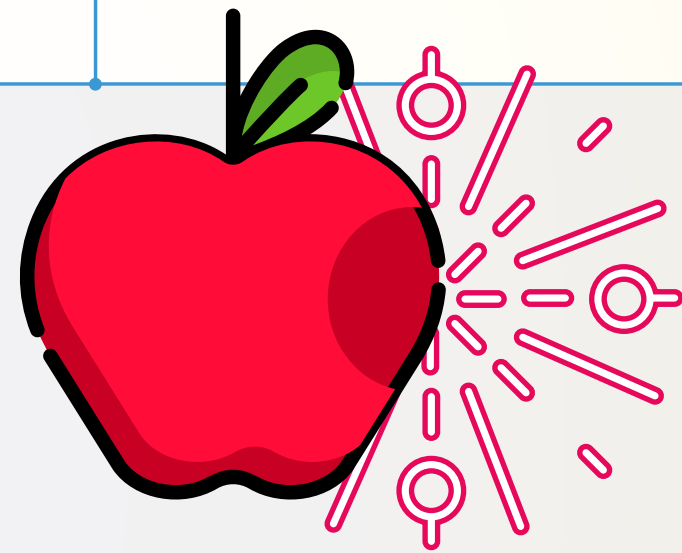
A metaphor is a comparison between two things by stating one thing is another.

The bed was a cloud and she floated away to sleep.



Personification is when a writer gives human characteristics to something non-human.

The moon gazed serenely at them from the dark sky.



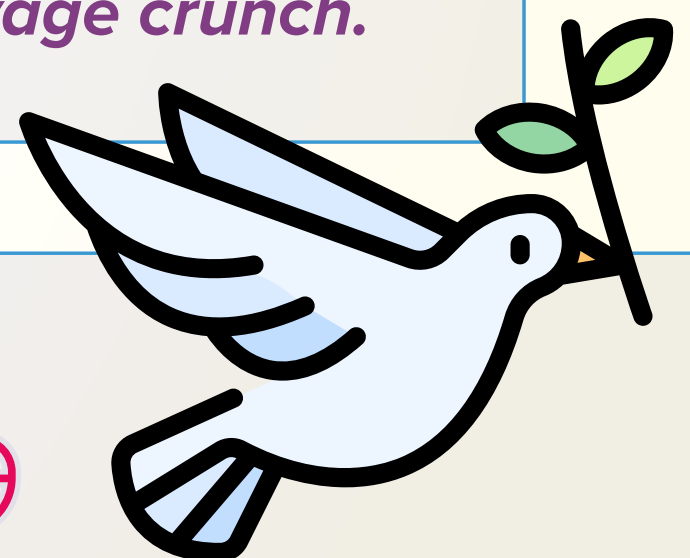
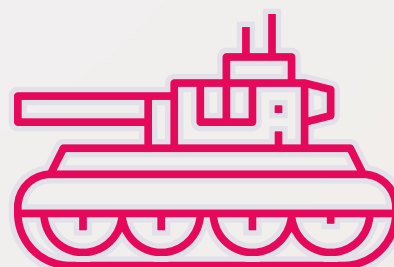
Onomatopoeia is a word which sounds like the sound it describes,

She bit into the apple with a savage crunch.



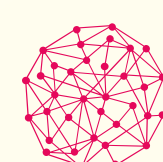
Alliteration is when a writer uses the same sound at the start of two or more nearby words.

Fluffy flakes of snow floated through the air.



A symbol is an object or a word that represents an idea.

A white dove soared through the open sky. The war was finally over.



CENTURY