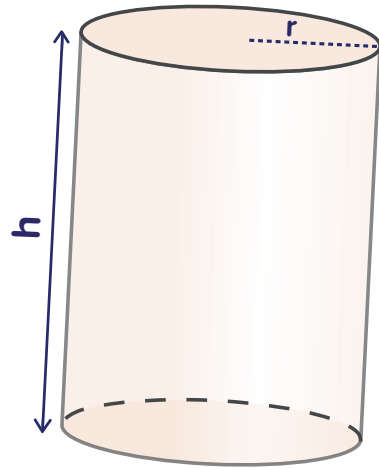


# Calculating the Volume of a **Cylinder** and a **Prism**

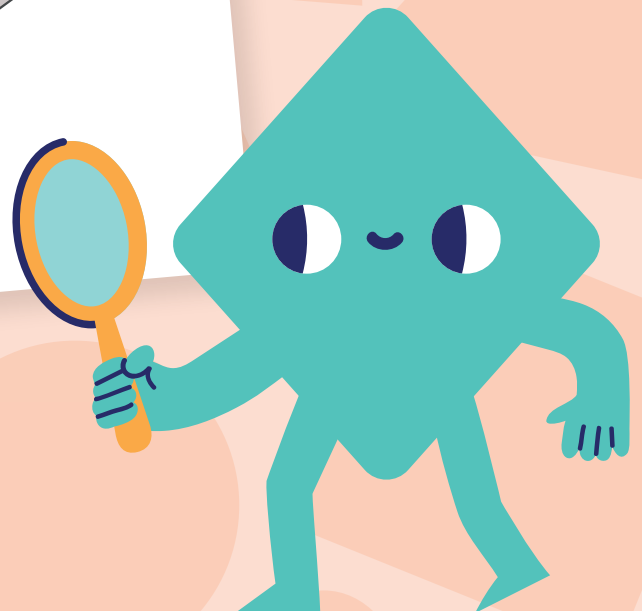
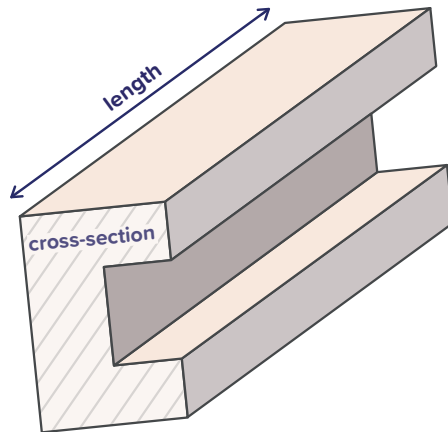
## The volume of a **Cylinder**

$$\text{Volume} = \pi r^2 h$$



## The volume of a **Prism**

$$\text{Volume} = \text{area of cross-section} \times \text{length}$$



Get more lessons, resources and  
assessments at [www.century.tech](http://www.century.tech)



**CENTURY**