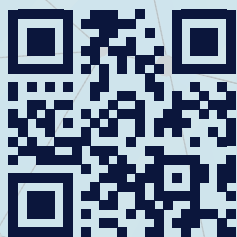
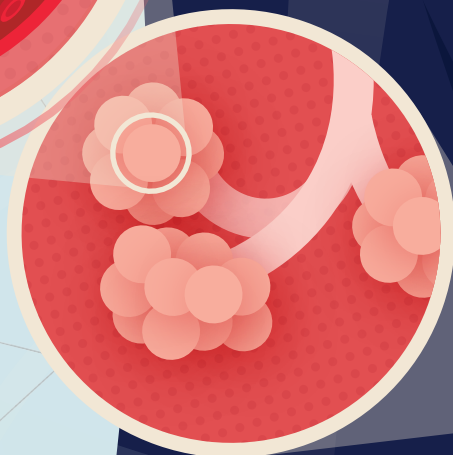
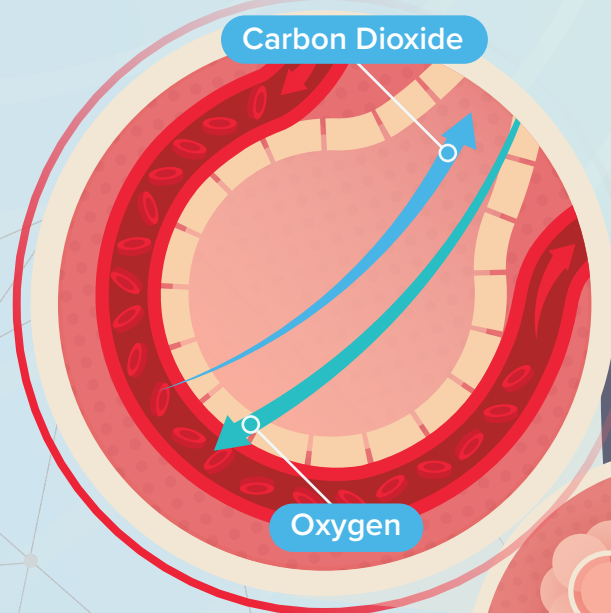


# GAS EXCHANGE

Gas exchange is the swapping of gases between an organism and its environment.

- 1 Air enters the body through the mouth and nose.
- 2 Air moves down the **trachea** which splits into two **bronchi**.
- 3 Air travels through smaller tubes in the lungs called **bronchioles**.
- 4 At an **alveolus**, oxygen in the air diffuses into the blood. Carbon dioxide diffuses out of the blood ready to leave the body.



Scan to learn more on

 CENTURY

