

Course Mapping Guide

International English

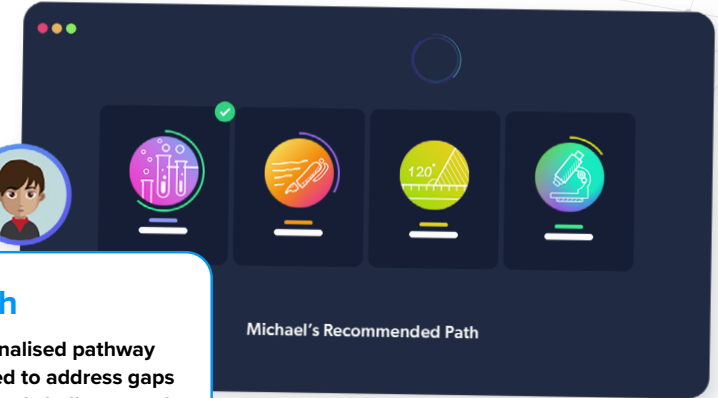
About CENTURY

CENTURY is a learning platform that uses artificial intelligence to personalise learning for every learner. Our team of experienced teachers have created all of our content for English, maths, science, geography and physical education from years 2 to 11, as well as functional skills content for post-16 learners. All courses are aligned to the national curriculum and national standards.

- ✓ Learning materials and questions for primary, secondary and post-16 learners
- ✓ Tailored to each learner's skills and knowledge
- ✓ Powered by the world's leading adaptive learning platform
- ✓ Web-based learning for tablets, laptops and desktops



How does CENTURY work?



Diagnostics

Learners begin by completing diagnostics that quickly identify knowledge gaps and misconceptions, and help CENTURY recommend the best learning materials for each individual learner.

Recommended Path

This constantly adapting personalised pathway contains micro-lessons designed to address gaps in knowledge, provide stretch and challenge and promote long-term memory retention.

Leadership Dashboard

Senior and middle leaders get an overview of performance and engagement on a subject, class and learner level.

Achievements

Learners get rewarded with badges and streaks for completing micro-lessons or for using CENTURY over a certain period of time to increase their motivation and engagement.

Automated Marking

Teachers can view data in real time, to help quickly identify which learners require additional support or further stretch.

Teacher Dashboard

Use the markbook to monitor individual learners and whole-class trends with a range of dashboards.

Learner Dashboard & Guardian Portal

Learners can identify their strengths and areas for improvement. Parents and guardians can monitor their learner's progress, completed work, and see work set.



International English Course Mapping



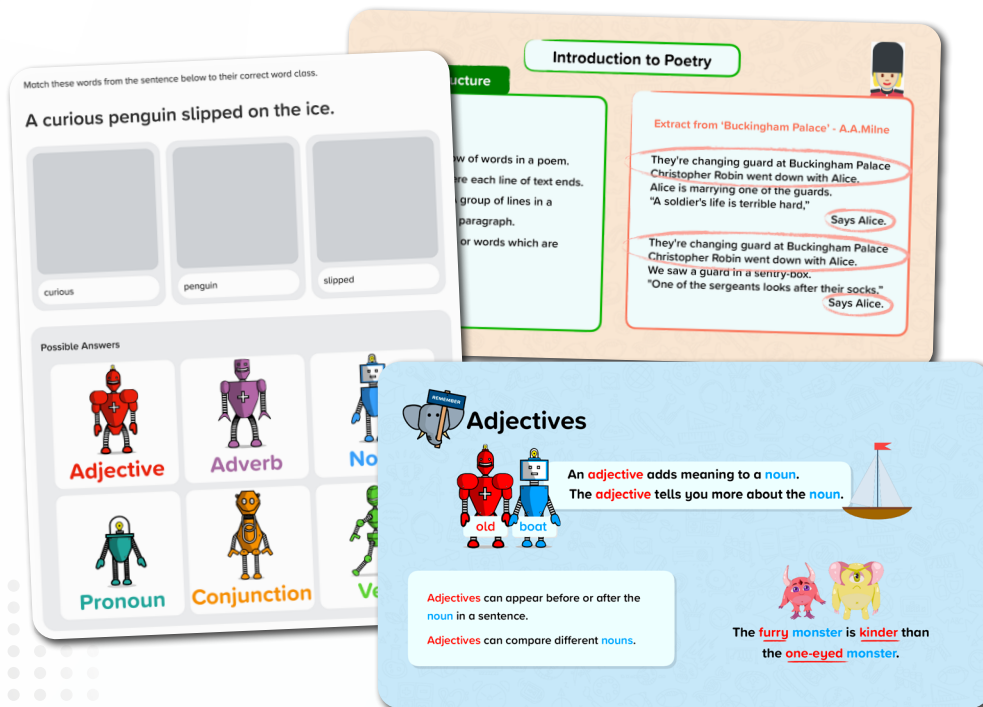
Want to see this in action?

Watch a CENTURY platform walkthrough

English Courses

Primary - SPaG

Our primary English offering includes both SPaG and reading courses for years 2 to 6. There is a specific SPaG course for each year group, but they also include prerequisite learning from previous years.



Primary – Year 2 SPaG



Primary – Year 3 SPaG



Primary – Year 4 SPaG



Primary – Year 5 SPaG



Primary – Year 6 SPaG

[Download course content](#)

English Courses

Primary Reading

We have a reading comprehension course for years 3 and 4, as well as a separate reading course for years 5 and 6 which focuses on specific reading skills.



Primary – Year 3-4 Reading Comprehension



Primary – Year 5-6 Reading

YOUR TURN

Q Which word is a synonym of 'enchanted' in this sentence?

Naughty

Clever

Life Cycles of Plants and Animals

Butterflies don't start life as the beautiful winged creatures we all think of. They start life as an egg like many other insects, laid by an adult female butterfly. You can actually see the tiny caterpillar inside the egg of some species from this egg hatches a caterpillar, which is an eating machine! They spend most of their time eating in order to gain strength for the next phase. In fact, they normally eat the whole leaf of their tree eating in order to gain strength for the next phase. When they have reached their full size, they form themselves into a chrysalis, also known as a pupa. Inside their chrysalis, the caterpillar undergoes a complete transformation. It grows wings, new organs and then emerges fully formed as an adult butterfly.

Which statement includes two events?

☐ Caterpillars form themselves into a chrysalis. They then emerge as butterflies.

☐ From this egg hatches a caterpillar. Caterpillars are eating more eggs of some species from this egg hatches a caterpillar, which is an eating machine!

☐ They start life as an egg like many other insects. They are laid by a female butterfly.

☐ Inside their chrysalis, the caterpillar undergoes a complete transformation.

Oliver balanced on the edge of his track. He reached around Henry's leg and pulled as hard as he could. Together, they wrestled one foot and then the other out of the thick mud. Henry was free.

Now for the bike. Henry took off his jacket and tied it around the back wheel. Using all their strength, the boys pulled hard and slowly freed the bike. Cold, tired, and caked in mud, the boys slowly wheeled the bike back over the track.

What were the boys excited about?

☐ playing in the rain

☐ trying out the new bike track

☒ waking up early

☐ eating their breakfast

Incorrect

This was not the reason that they were excited. Read the first paragraph carefully.

Correct Answer

NEXT QUESTION

English Courses

English Language KS3

Our KS3 English Language courses cover reading and writing skills across both fiction and non-fiction, including language, structure, analysis, text types and writing for purpose.

Structuring your writing

- Use a range of sentence structures and sentence lengths.
- Use paragraphs to organise your writing.

Dear Sir/ Madam,

I am writing to apply for the position of waiter at The Cafe on Saturdays.

Firstly, I would like to begin by stating how much I love The Cafe and that I would very much enjoy working here. I have always lived just down the road and have frequently visited The Cafe. The food is always delicious, the staff are unfailingly friendly and it is my favourite place to meet a friend for a cup of tea. I would make it my mission to help create the warm and welcoming atmosphere that I have always enjoyed so much.

Secondly, I think that I would make an excellent addition to the staff. I am a very confident and hard-working person. The customers feel welcome from the moment they walk in. I am a hard-worker, organised and reliable.

I am applying to a hospitality and tourism course, so I think I would be invaluable to the staff at The Cafe.

1 Comparatives and Superlatives

Comparatives are used to compare two things.
Superlatives are used to compare one thing with everything else in that group.

Did you know?
Most adjectives have three forms: the absolute, the comparative and the superlative. You can often find these forms in a dictionary if they do not fit the regular pattern.

CLEVER - adjective (C)

Choose the simile below.

☐ The night sky was as black as coal.

☐ The sky was sunny and clear.

☒ There was a blanket of fog in the sky.

☐ It was such a sunny day. In fact, it was the sunniest day of the summer so far.

Incorrect
No, this is a metaphor, not a simile. Remember to look out for the words 'like' and 'as' when deciding if a sentence includes a simile!

correct answer

Spring
represents childhood: just as children are growing up, plants and seeds begin to grow.

Summer
symbolises adulthood: plants reach maturity - trees are in full bloom.

Autumn
symbolises old age: the leaves on the trees turn golden brown, preparing to fall.

Winter
represents death: all the trees are bare and all plant life is, essentially, dead.



English Language KS3



English Language KS3 Reading



English SPaG Secondary



English Language – Gothic Reading

[Download course content](#)

English Courses

Secondary English Language GCSE

Our GCSE English Language courses cover reading and writing skills across both fiction and non-fiction, including language, structure, analysis, text types and writing for purpose.



English Language GCSE



English Language GCSE: AQA

Specification: 8700



English Language GCSE: Edexcel

Specification: 1EN0



English Language GCSE: Eduqas

Specification: C700QS



English Language IGCSE: Cambridge

Specification: 500



English Language IGCSE: Edexcel B

Specification: 4EB1



English Second Language IGCSE: Cambridge

Specification: 0510/0511



English SPaG GCSE

[Download course content](#)

English Courses

Secondary English Literature - Shakespeare

Our literature courses explore plot, characters, themes, context, language, structure, form, and are suitable for all exam boards.



English Literature – A Midsummer Night's Dream



English Literature – Macbeth



English Literature – Much Ado About Nothing



English Literature – Romeo and Juliet

[Download course content](#)

English Courses

Secondary English Literature – Modern Prose & Drama

Our literature courses explore plot, characters, themes, context, language, structure, form, and are suitable for all exam boards.



English Literature – An Inspector Calls



English Literature – Animal Farm



English Literature – Blood Brothers

[Download course content](#)

English Courses

Secondary English Literature – 19th-century Novels

Our literature courses explore plot, characters, themes, context, language, structure, form, and are suitable for all exam boards.



English Literature – A Christmas Carol



English Literature – Jekyll and Hyde



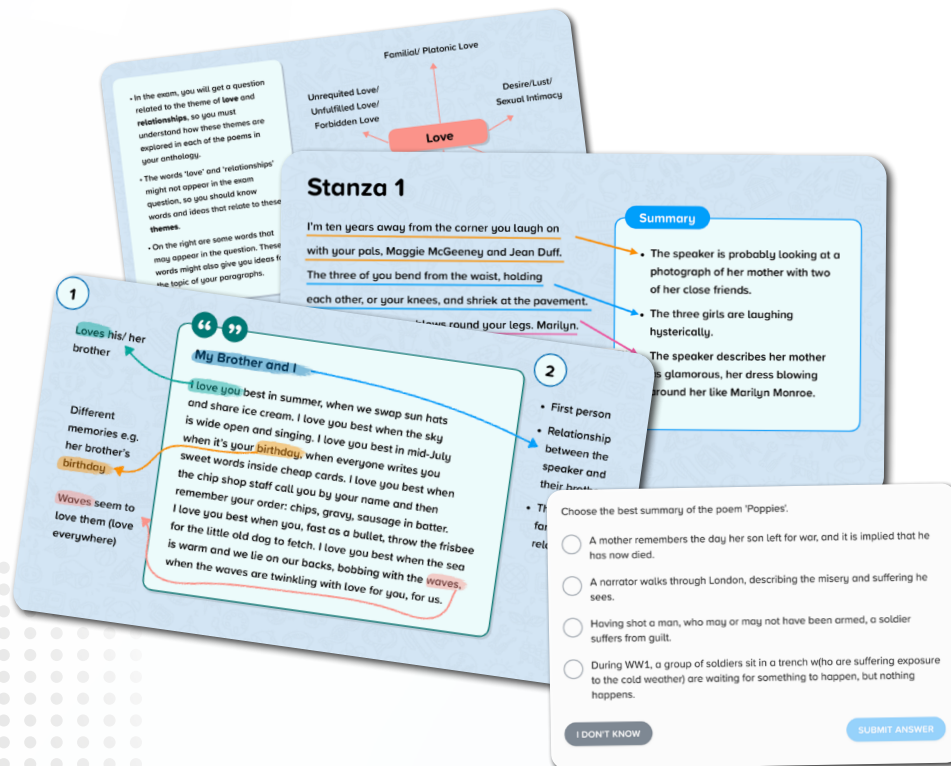
English Literature – The Sign of the Four

[Download course content](#)

English Courses

Secondary English Literature - Poetry

Our literature courses explore plot, characters, themes, context, language, structure, form, and are suitable for all exam boards.



English Literature – Love & Relationships: AQA



English Literature – Power & Conflict AQA



English Literature – Much Ado About Nothing



English Literature – Unseen Poetry

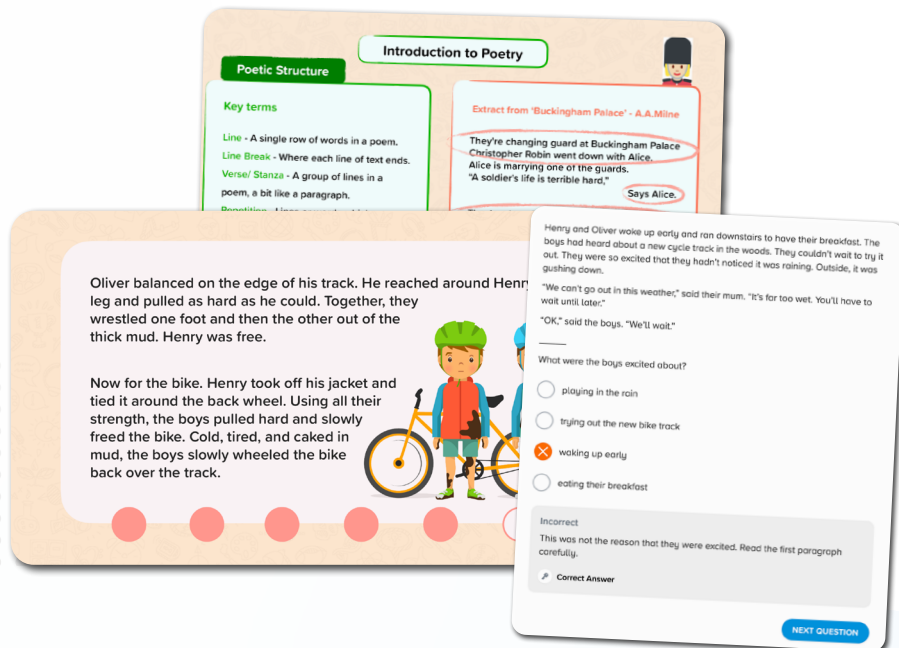
[Download course content](#)

English Courses

International Baccalaureate — PYP

Our primary English offering includes both SPaG and reading courses for grades 2 to 5. There is a specific SPaG course for each grade, but they also include prerequisite learning from previous grades.

We have a reading comprehension course for grades 2 and 3, as well as a separate reading course for grades 4 and 5 which focuses on specific reading skills.



Primary Reading Comprehension Grades 2 & 3



Primary Reading - Grades 4 & 5



Primary SPaG - Grades 2 & 3



Primary SPaG - Grades 4 & 5

[Download course content](#)

English Courses

International Baccalaureate — MYP

Our secondary English Language courses cover reading and writing skills across both fiction and non-fiction, including language, structure, analysis, text types and writing for purpose. There are separate SPaG courses which cover spelling, punctuation and grammar.



Lower MYP Reading



MYP (Lower)



MYP (Upper)



MYP SPaG

Structuring your writing

- Use a range of sentence structures and sentence lengths.
- Use paragraphs to organise your writing.

Dear Sir/ Madam,

I am writing to apply for the position of waiter at The Cafe on Saturdays.

Firstly, I would like to begin by stating how much I love The Cafe and that I would very much enjoy working here. I have always lived just down the road and have frequently visited The Cafe. The food is always delicious, the staff are unfailingly friendly and it is my favourite place to meet a friend for a cup of tea. I would make it my mission to help create the warm and welcoming atmosphere that I have always enjoyed so much.

Secondly, I think that I would make an excellent addition to the staff. I am a very confident and friendly person who has worked in the cafe industry for two years. The customers feel welcome from the moment they walk in. I am a hard-worker, organised and reliable.

I am applying to a hospitality and tourism course, so I think I would be a valuable asset to the team at The Cafe and would be invaluable to me.

1 Comparatives and Superlatives

Comparatives are used to compare two things.

Superlatives are used to compare everything else.

Did you know?

Most adjectives have the comparative and superlative forms. However, some do not fit the regular pattern.

Example:

John is taller than Jane.

Jane is taller than John.

Choose the simile below.

- ☐ The night sky was as black as coal.
- ☐ The sky was sunny and clear.
- ☒ There was a blanket of fog in the sky.
- ☐ It was such a sunny day. In fact, it was the sunniest day of the summer so far.

Incorrect

No, this is a metaphor, not a simile. Remember to look out for the words 'like' and 'as' when deciding if a sentence includes a simile!

correct answer

Next Question

Our seasons can symbolise different stages of life:

Spring

symbolises childhood: children are growing up, plants and animals begin to grow.

Summer

symbolises adulthood: each maturity - plants are in full bloom.

Autumn

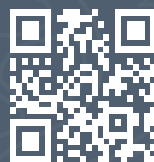
symbolises old age: the leaves on the trees turn golden brown, preparing to fall.

Winter

represents death: all the trees are bare and all plant life is essentially dead.

[Download course content](#)

Questions?
Email support@century.tech



CENTURY