

Curriculum Guide

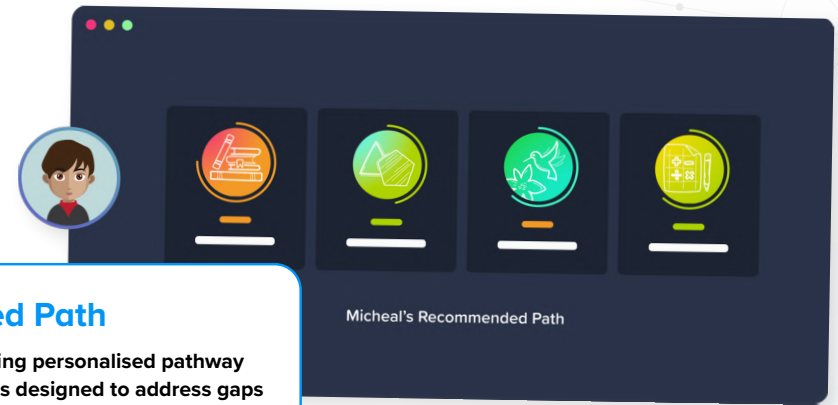
About CENTURY

CENTURY is a learning platform that uses artificial intelligence to personalise learning for every learner. Our team of experienced teachers have created all of our content for English, maths, science, geography and physical education from years 2 to 11, as well as functional skills content for post-16 learners. All courses are aligned to the national curriculum and national standards.

- ✓ Learning materials and questions for primary, secondary and post-16 learners
- ✓ Tailored to each learner's skills and knowledge
- ✓ Powered by the world's leading adaptive learning platform
- ✓ Web-based learning for tablets, laptops and desktops



How does CENTURY work?



Diagnostics

Learners begin by completing diagnostics that quickly identify knowledge gaps and misconceptions, and help CENTURY recommend the best learning materials for each individual learner.

Recommended Path

This constantly adapting personalised pathway contains micro-lessons designed to address gaps in knowledge, provide stretch and challenge and promote long-term memory retention.

Leadership Dashboard

Senior and middle leaders get an overview of performance and engagement on a subject, class and learner level.

Achievements

Learners get rewarded with badges and streaks for completing micro-lessons or for using CENTURY over a certain period of time to increase their motivation and engagement.

Automated Marking

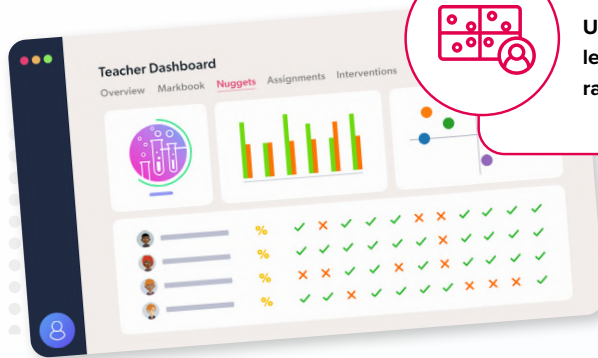
Teachers can view data in real time, to help quickly identify which learners require additional support or further stretch.

Teacher Dashboard

Use the markbook to monitor individual learners and whole-class trends with a range of dashboards.

Learner Dashboard & Guardian Portal

Learners can identify their strengths and areas for improvement. Parents and guardians can monitor their learner's progress, completed work, and see work set.



TeacherGENie™

Making generative AI work for teachers

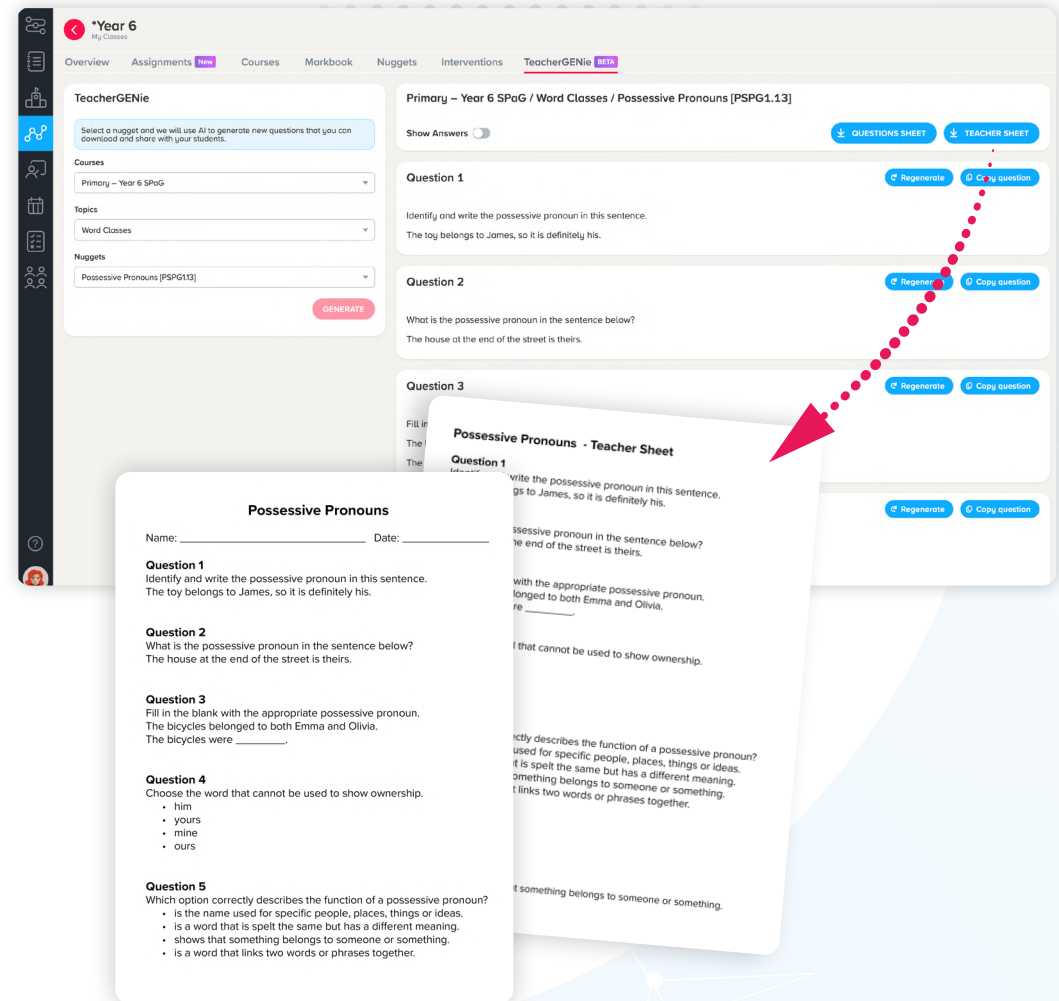
CENTURY has always led the way in embedding AI into education through our teaching and learning platform. TeacherGENie™ goes beyond using generative AI alone, as we know the true value of these tools can only be realised when they are combined with quality, teacher-made resources.

These worksheets, consisting of five questions, can be used:

- ✓ in class as a starter to assess prior knowledge,
- ✓ as a plenary to check learning,
- ✓ as part of home learning,
- ✓ as a great revision tool in the run up to exams.

With the 'Copy question' button, you can easily copy and paste the generated content to use elsewhere.

By grounding generative AI in expertly crafted learning resources, we're making sure that tools such as TeacherGENie™ deliver meaningful, classroom-ready materials that genuinely support teaching goals.



Course Coverage - Primary



Course Coverage - Secondary

	Primary	Secondary					Further Education
		Year 7	Year 8	Year 9	Year 10	Year 11	
English		English Language KS3 					
		English Reading 					
		English Literature – 19th-century Novels 					
		English Literature – Shakespeare 					
				English Literature – Modern Prose & Drama 			
				English Literature – Poetry 			
				English Literature – 19th-century Novels 			
				English SPaG GCSE			
				English Language GCSE (AQA, Edexcel, Eduqas) 			
				English Language IGCSE (Cambridge, Edexcel B) 			
				English Second Language IGCSE: Cambridge			
Maths		Mathematics Secondary (F+)					
		Mathematics Secondary (F)					
		Mathematics Secondary (H)					
		Mathematics IGCSE: Cambridge (Core)					
		Mathematics IGCSE: Cambridge (Extended)					
		Mathematics IGCSE: Edexcel (F)					
		Mathematics IGCSE: Edexcel (H)					
		Financial Maths			Bridge to A-Level		
Science		KS3 – Biology, Chemistry & Physics					
			GCSE Biology (Exam Board Aligned) 				
			GCSE Chemistry (Exam Board Aligned) 				
			GCSE Physics (Exam Board Aligned) 				
		Working Scientifically					
				Prepare for A-Level Science 			
Geography				Geography GCSE (AQA, Edexcel, Eduqas, OCR) 			
				Geography IGCSE (Cambridge, Edexcel, Oxford AQA) 			
PE				Physical Education GCSE (AQA, Edexcel, WJEC, OCR, IGCSE Cambridge) 			
				Physical Education - Vocational 			
Digital Skills		Digital Skills Secondary 					

Course Coverage - FE

	Secondary	Further Education	
	Year 11	Year 12	Year 13
English		FE English Language GCSE (Edexcel, Edexcel 2.0, Eduqas, WJEC) 	
		FE English SPaG	
		Functional Skills (Entry 1)	
		Functional Skills (Entry 2)	
		Functional Skills (Entry 3)	
		Functional Skills (Level 1)	
		Functional Skills (Level 2)	
Maths		FE Maths GCSE (F)	
		FE Maths GCSE (H)	
		FE Mathematics GCSE: WJEC	
		Number & Measure Edexcel (Level 1)	
		Number & Measure Edexcel (Level 2)	
		Financial Maths	
		Functional Skills (Entry 1)	
		Functional Skills (Entry 2)	
		Functional Skills (Entry 3)	
		Functional Skills (Level 1)	
		Functional Skills (Level 2)	
	Bridge to A-Level		
Science	Prepare for A-Level Science		
Digital Skills		Digital Skills (Entry 3)	
		Digital Skills (Level 1)	

English Courses



Primary

Primary SPaG →

Primary – Year 2 SPaG
Primary – Year 3 SPaG
Primary – Year 4 SPaG
Primary – Year 5 SPaG
Primary – Year 6 SPaG

Primary Reading →

Primary – Year 3-4 Reading Comprehension
Primary – Year 5-6 Reading

Secondary

Secondary English Language KS3 →

English Language KS3
English SPaG Secondary

Secondary English Reading →

English Reading: Fiction & Nonfiction
English Reading: Gothic Fiction
English Reading: 19th Century Fiction
English Reading: Children's Classics

Secondary English Language GCSE →

English Language GCSE
English Language GCSE: AQA
English Language GCSE: Edexcel
English Language GCSE: Eduqas
English Language IGCSE: Cambridge
English Language IGCSE: Edexcel B
English Language GCSE: Edexcel 2.0
English SPaG GCSE

Secondary English Literature - 19th-century Novels →

English Literature – A Christmas Carol
English Literature – Jekyll and Hyde
English Literature – The Sign of the Four

Secondary English Literature - Shakespeare →

English Literature – A Midsummer Night's Dream
English Literature – Macbeth
English Literature – Much Ado About Nothing
English Literature – Romeo and Juliet

Secondary English Literature - Modern Prose & Drama →

English Literature – An Inspector Calls
English Literature – Animal Farm
English Literature – Blood Brothers

Secondary English Literature - Poetry →

English Literature Poetry – Love & Relationships: AQA
English Literature Poetry – Power & Conflict: AQA
English Literature Poetry – Power & Conflict: Edexcel
English Literature Poetry – Unseen Poetry

Further Education

English Courses: FE English Language GCSE →

FE – English Language GCSE
FE – English Language GCSE: AQA
FE – English Language GCSE: Edexcel
FE – English Language GCSE: Eduqas
FE – English SPaG
FE – English Language GCSE: WJEC

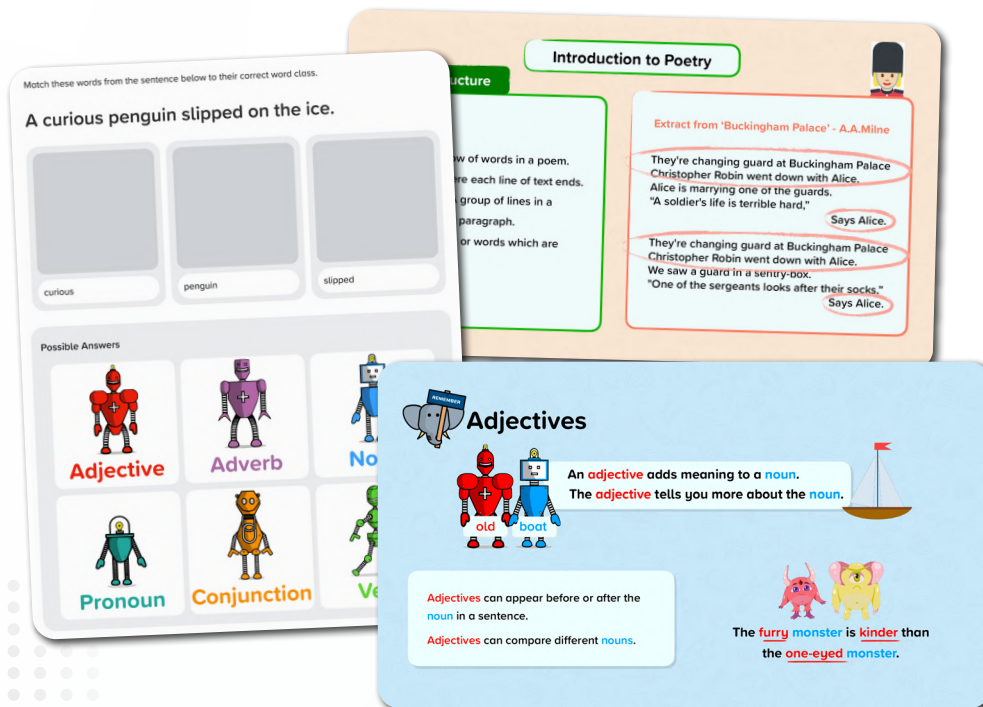
English Courses - Functional Skills →

FE – English Functional Skills (Entry 1)
FE – English Functional Skills (Entry 2)
FE – English Functional Skills (Entry 3)
FE – English Functional Skills (Level 1)
FE – English Functional Skills (Level 2)

English Courses

Primary - SPaG

Our primary English offering includes both SPaG and reading courses for years 2 to 6. There is a specific SPaG course for each year group, but they also include prerequisite learning from previous years.



Primary – Year 2 SPaG



Primary – Year 3 SPaG



Primary – Year 4 SPaG



Primary – Year 5 SPaG



Primary – Year 6 SPaG

[Download course content](#)

English Courses

Primary Reading

We have a reading comprehension course for years 3 and 4, as well as a separate reading course for years 5 and 6 which focuses on specific reading skills.



**Primary – Year 3-4
Reading Comprehension**



Primary – Year 5-6 Reading

YOUR TURN

Everyone agreed that they were **enchanted** children. One had a bad word to say about them!

Q Which word is a synonym of 'enchanted' in this sentence?

Naughty

Clever

Life Cycles of Plants and Animals

Butterflies don't start life as the beautiful winged creatures we all think of. They start life as an egg like many other insects, laid by an adult female butterfly. You can actually see the tiny caterpillar inside the egg of some species from this egg hatches a caterpillar, which is an eating machine! They spend most of their time eating in order to gain strength for the next phase. In fact, they normally eat the whole leaf they are hatched on. When they have reached their full size, they form themselves into a chrysalis, also known as a pupa. Inside their chrysalis, the caterpillar undergoes a complete transformation. It grows wings, new organs and then emerges fully formed as an adult butterfly.

Which statement includes two events?

☐ Caterpillars form themselves into a chrysalis. They then emerge as butterflies.

☐ From this egg hatches a caterpillar. Caterpillars are eating most of the leaf they are laid on.

☐ They start life as an egg like many other insects. They are laid by a female butterfly.

☐ Inside their chrysalis, the caterpillar undergoes a complete transformation.

I DON'T KNOW

Oliver balanced on the edge of his track. He reached around Henry's leg and pulled as hard as he could. Together, they wrestled one foot and then the other out of the thick mud. Henry was free.

Now for the bike. Henry took off his jacket and tied it around the back wheel. Using all their strength, the boys pulled hard and slowly freed the bike. Cold, tired, and caked in mud, the boys slowly wheeled the bike back over the track.

Henry and Oliver woke up early and ran downstairs to have their breakfast. The boys had heard about a new cycle track in the woods. They couldn't wait to try it out. They were so excited that they hadn't noticed it was raining. Outside, it was gushing down.

"We can't go out in this weather," said their mum. "It's far too wet. You'll have to wait until later."

"OK," said the boys. "We'll wait."

What were the boys excited about?

☐ playing in the rain

☐ trying out the new bike track

☒ waking up early

☐ eating their breakfast

Incorrect

This was not the reason that they were excited. Read the first paragraph carefully.

Correct Answer

NEXT QUESTION

[Download course content](#)

English Courses

Secondary English Language KS3

Our KS3 English Language courses cover reading and writing skills across both fiction and non-fiction, including language, structure, analysis, text types and writing for purpose.



English Language KS3



English SPaG Secondary

The collage features several educational materials:

- Structuring your writing**: A worksheet with bullet points: "Use a range of sentence structures and sentence lengths." and "Use paragraphs to organise your writing." It includes a sample letter to "Dear Sir/ Madam" with annotations.
- Comparatives and Superlatives**: A worksheet explaining that comparatives are used to compare two things and superlatives are used to compare one thing with everything else in a group. It includes examples: "Jane is taller than John.", "She is the best sister!", "He is more intelligent than they first thought.", and "That is the worst smelling".
- Did you know?**: A note stating that most adjectives have three forms: the absolute, the comparative, and the superlative. It advises checking a dictionary for irregular patterns.
- CLEVER - adjective (C)**: A worksheet with a multiple-choice question: "Choose the simile below." The options are:
 - ☐ The night sky was as black as coal.
 - ☐ The sky was sunny and clear.
 - ☒ There was a blanket of fog in the sky.
 - ☐ It was such a sunny day. In fact, it was the sunniest day of the summer so far.The correct answer is "There was a blanket of fog in the sky." A note explains that this is a metaphor, not a simile, and reminds students to look out for the words "like" and "as" when deciding if a sentence includes a simile.
- The four seasons can symbolise different stages of life:**: A worksheet with four sections:
 - Spring**: represents childhood: just as children are growing up, plants and seeds begin to grow.
 - Summer**: symbolises adulthood: plants reach maturity - trees are in full bloom.
 - Autumn**: symbolises old age: the leaves on the trees turn golden brown, preparing to fall.
 - Winter**: represents death: all the trees are bare and all plant life is, essentially, dead.

[Download course content](#)

English Courses

Secondary English Reading

These courses contain a selection of extracts taken from a range of texts, followed by reading questions which assess skills such as comprehension, inference, and analysing language and structure devices.

The Body Snatchers

By Robert Louis Stevenson

This is an extract from 'The Body Snatchers', a short story written in 1885 by Robert Louis Stevenson. It tells the story of two men, Macfarlane and Fettes, who are body snatchers - people who steal the corpses of people who have recently died from their graves. They would then use these bodies to universities for dissection and other medical research. At the time the story was written, body snatching was a crime punishable by imprisonment.

It was by this time growing somewhat late. The gig, according to order, was brought round the door with both lamps brightly shining, and the young men had to pay their bill and take their hats. They entered the house, and the young men, having paid the bill, returned upon their way. They entered the house, and the young men, having paid the bill, returned upon their way. They entered the house, and the young men, having paid the bill, returned upon their way.

Which image most accurately matches the description of Sleepy Hollow?

Question

Label each image with the correct word or phrase from the extract. You can use a dictionary to help you.

moorland

fertile country

draped in ivy

Match each part of this image to the correct quotation.



English Reading: Fiction & Nonfiction



English Reading: Gothic Fiction



English Reading: 19th Century Fiction



English Reading: Children's Classics

Download course content

English Courses

Secondary English Language GCSE

Our GCSE English Language courses cover reading and writing skills across both fiction and non-fiction, including language, structure, analysis, text types and writing for purpose.



English Language GCSE



English Language GCSE: AQA

Specification: 8700



English Language GCSE: Edexcel

Specification: 1EN0



English Language GCSE: Eduqas

Specification: C700QS



English Language IGCSE: Cambridge

Specification: 500



English Language IGCSE: Edexcel B

Specification: 4EB1



English Second Language IGCSE: Cambridge

Specification: 0510/0511



English SPaG GCSE

[Download course content](#)

English Courses

Secondary English Literature – 19th-century Novels

Our literature courses explore plot, characters, themes, context, language, structure, form, and are suitable for all exam boards.



English Literature – A Christmas Carol



English Literature – Jekyll and Hyde



English Literature – The Sign of the Four

[Download course content](#)

English Courses

Secondary English Literature - Shakespeare

Our literature courses explore plot, characters, themes, context, language, structure, form, and are suitable for all exam boards.



English Literature – A Midsummer Night's Dream



English Literature – Macbeth



English Literature – Much Ado About Nothing



English Literature – Romeo and Juliet

[Download course content](#)

English Courses

Secondary English Literature – Modern Prose & Drama

Our literature courses explore plot, characters, themes, context, language, structure, form, and are suitable for all exam boards.



English Literature – An Inspector Calls



English Literature – Animal Farm



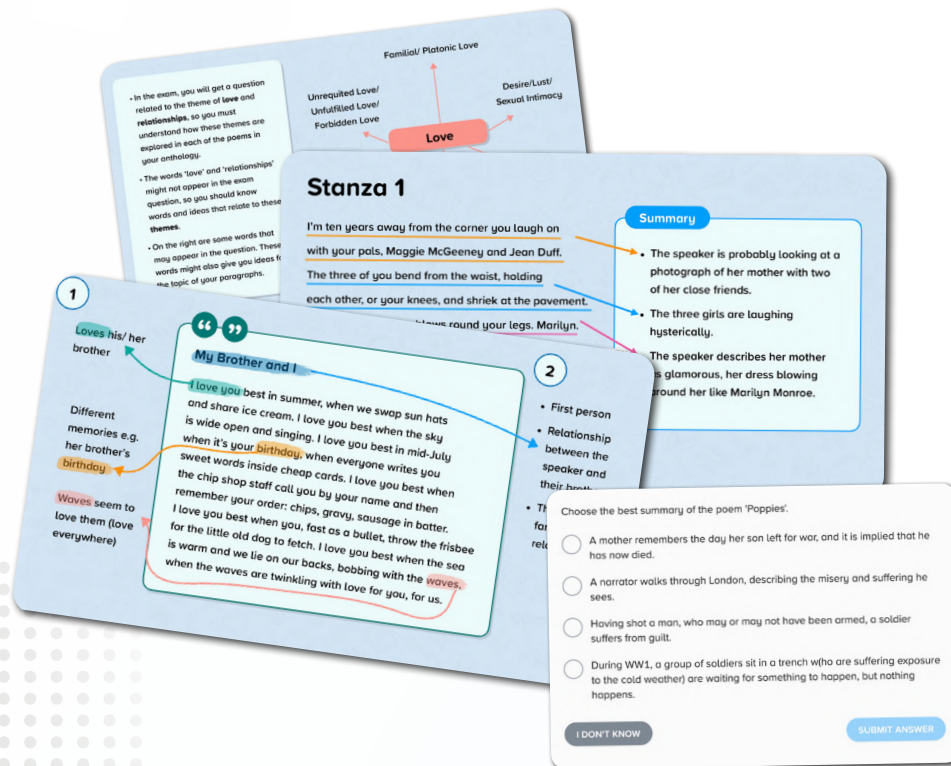
English Literature – Blood Brothers

[Download course content](#)

English Courses

Secondary English Literature - Poetry

Our literature courses explore plot, characters, themes, context, language, structure, form, and are suitable for all exam boards.



**English Literature –
Love & Relationships: AQA**



**English Literature –
Power & Conflict: AQA**



**English Literature –
Power & Conflict: Edexcel**



English Literature – Unseen Poetry

[Download course content](#)

English Courses

Further Education English Language GCSE

Our GCSE English Language courses cover reading and writing skills across both fiction and non-fiction, including language, structure, analysis, text types and writing for purpose.



FE – English Language GCSE



FE – English Language GCSE: Edexcel 2.0

Specification: 1EN2



FE – English Language GCSE: AQA

Specification: 8700



FE – English Language GCSE: Eduqas

Specification: C700QS



FE – English Language GCSE: Edexcel

Specification: 1EN0



FE – English SPaG

[Download course content](#)

English Courses

FE – English Language GCSE: WJEC



The course covers reading and writing skills and a variety of language and structural techniques for both fiction and non-fiction extracts.



FE – English Language GCSE: WJEC


Specification: 3700QS
QAN: 601/4943/7

Question
Match the image with the description



Task
Let's try exploring connotations with the image of a rose.
When you look at a rose, what does it make you think of?

Delicate **Beautiful** **Love**



Formatting

Include their email address

The subject is a summary of the topic of the email.

Use format openings and closings

If you don't know their name, address the email to 'Dear Sir/ Madam'.

New message

To: The Train Company

Subject: Train ticket refund

Dear Sir/ Madam,

I would like to make a complaint about a cancelled train journey. I was supposed to be travelling from London to Edinburgh on the 15th of April. However, my train was cancelled. I expect a full refund of the cost of my train ticket. I look forward to your reply.

Kind regards
Jane Smith

SEND


The curtains flapped violently. Thunder clapped and lightning shot through the air. A door slammed shut. Ellie jumped.

The narrator describes that the "thunder clapped" and a "door slammed" to evoke the sudden, sharp, surprising noises. This explains why the character, Ellie, feels scared.

The writer evokes a vivid image of the fire by describing the sound it makes as it "crackled" and "snapped". This helps us to understand why the warm fire was such a comfort to the character at this point.

The campsite was illuminated by a fat yellow moon which glowed merrily; stars winked in the night sky. The canvas tent fluttered and flapped comfortably in the mild breeze as I sat beside the fire, warming my hands. The fire crackled and snapped, sparks shooting out into the dark air.

'We must do something to protect the endangered red squirrel in the UK. This poor creature is _____ the larger, more powerful grey squirrel, and needs our help to save it from being totally wiped out. It is this nation's greatest test yet!'



to fill the gap to make us feel sympathy for the

Download course content

English Courses

Functional Skills

Our functional skills courses cover the knowledge and skills required for the functional skills qualifications, mapped to the national requirements outlined by the DfE.

Similes

A simile is when you say one thing is like another. It is a comparison between the two things. It often includes the word 'like' or 'as'.

The ball flew into the sky like a rocket.

Rockets go high into the sky very quickly.

This simile suggests that the ball went upwards very quickly.

Question

What is the main point of this text?

Read this text and identify what the key words are.

Are you p...

Who we an...

We are a s...

the middle...

working, re...

What we a...

We are see...

person whi...

positions o...

commitme...

Contact jo...

Which of these sentences is a simile?

☐ She was fishing for compliments.

☐ He was as brave as a lion.

☐ Lions are powerful and majestic.

☐ He was the apple of her eye.

I DON'T KNOW

SUBMIT ANSWER



**FE – English Functional Skills
(Entry 1)**



**FE – English Functional Skills
(Entry 2)**



**FE – English Functional Skills
(Entry 3)**



**FE – English Functional Skills
(Level 1)**



**FE – English Functional Skills
(Level 2)**

[Download course content](#)

Mathematics Courses



Primary

Mathematics Courses - Primary - Year Group Specific →

Primary – Year 2 Mathematics

Primary – Year 3 Mathematics

Primary – Year 4 Mathematics

Primary – Year 5 Mathematics

Primary – Year 6 Mathematics

Mathematics Courses - Primary - Additional Courses →

Primary – Multiplication Tables

Primary – Year 5-6 Arithmetic

Mathematics Courses - Primary - White Rose →

White Rose Mathematics - Year 2

White Rose Mathematics - Year 3

White Rose Mathematics - Year 4

White Rose Mathematics - Year 5

White Rose Mathematics - Year 6

White Rose Mathematics - Mixed Age

Secondary

Mathematics Courses - Secondary →

Mathematics – Bridge to A-Level

Mathematics Secondary (F)

Mathematics Secondary (F+)

Mathematics Secondary (H)

Number & Measure: Edexcel (Levels 1 & 2)

Financial Maths

Mathematics Courses - Secondary - White Rose →

White Rose Mathematics - Year 7

White Rose Mathematics - Year 8

White Rose Mathematics - Year 9

White Rose Mathematics - Year 10

White Rose Mathematics - Year 11

Mathematics Courses - IGCSE →

Mathematics IGCSE: Cambridge (Core)

Mathematics IGCSE: Cambridge (Extended)

Mathematics IGCSE: Edexcel (F)

Mathematics IGCSE: Edexcel (H)

Further Education

Mathematics Courses: Further Education GCSE →

FE – Mathematics GCSE (F)

FE – Mathematics GCSE (H)

FE – Mathematics GCSE: WJEC

Mathematics Courses - Functional Skills →

FE – Mathematics Functional Skills (Entry 1)

FE – Mathematics Functional Skills (Entry 2)

FE – Mathematics Functional Skills (Entry 3)

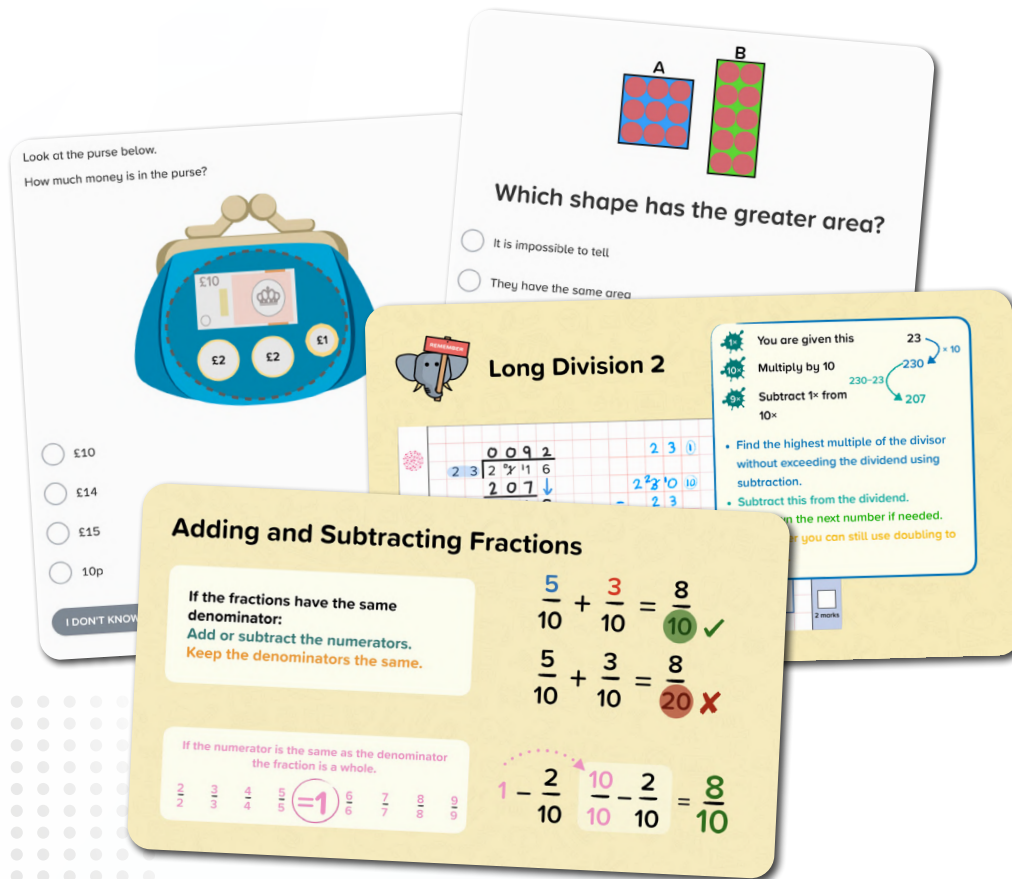
FE – Mathematics Functional Skills (Level 1)

FE – Mathematics Functional Skills (Level 2)

Mathematics Courses

Primary - Year Group Specific

Our primary mathematics offering includes specific courses for each year group, from years 3 to 6.



Primary – Year 2 Mathematics



Primary – Year 3 Mathematics



Primary – Year 4 Mathematics



Primary – Year 5 Mathematics



Primary – Year 6 Mathematics

[Download course content](#)

Mathematics Courses

Primary - Additional Courses

Our primary mathematics offering includes specific courses for each year group, from years 3 to 6.



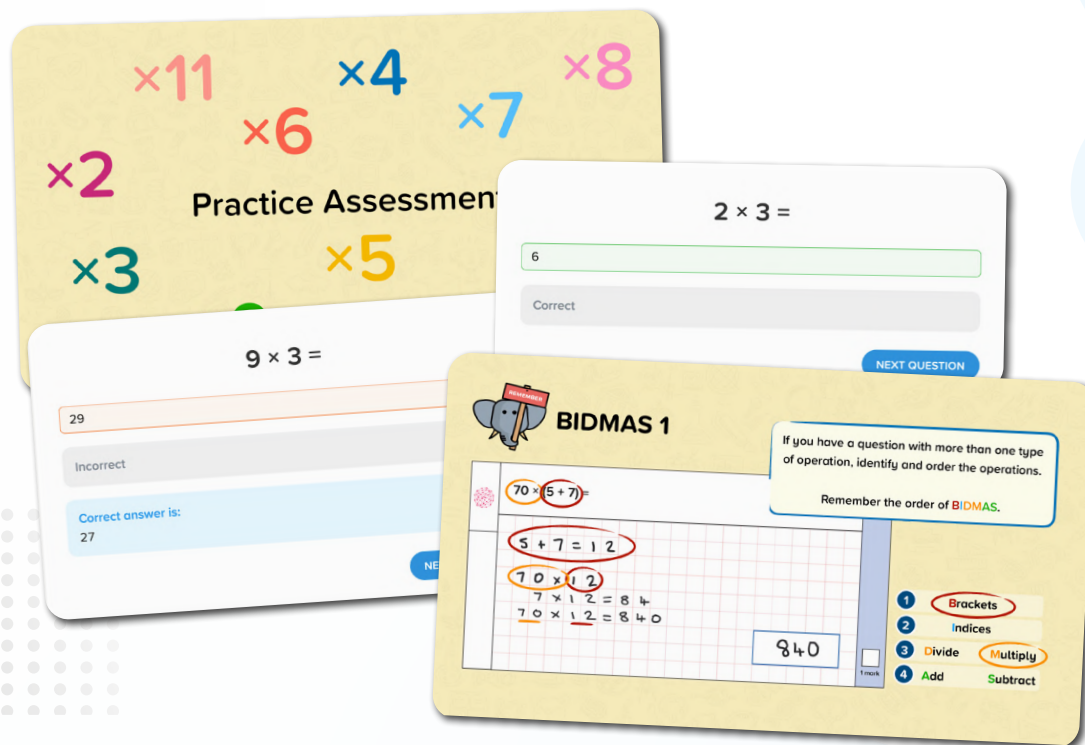
Primary – Year 2 Multiplication Tables



Primary – Multiplication Tables



Primary – Year 5-6 Arithmetic

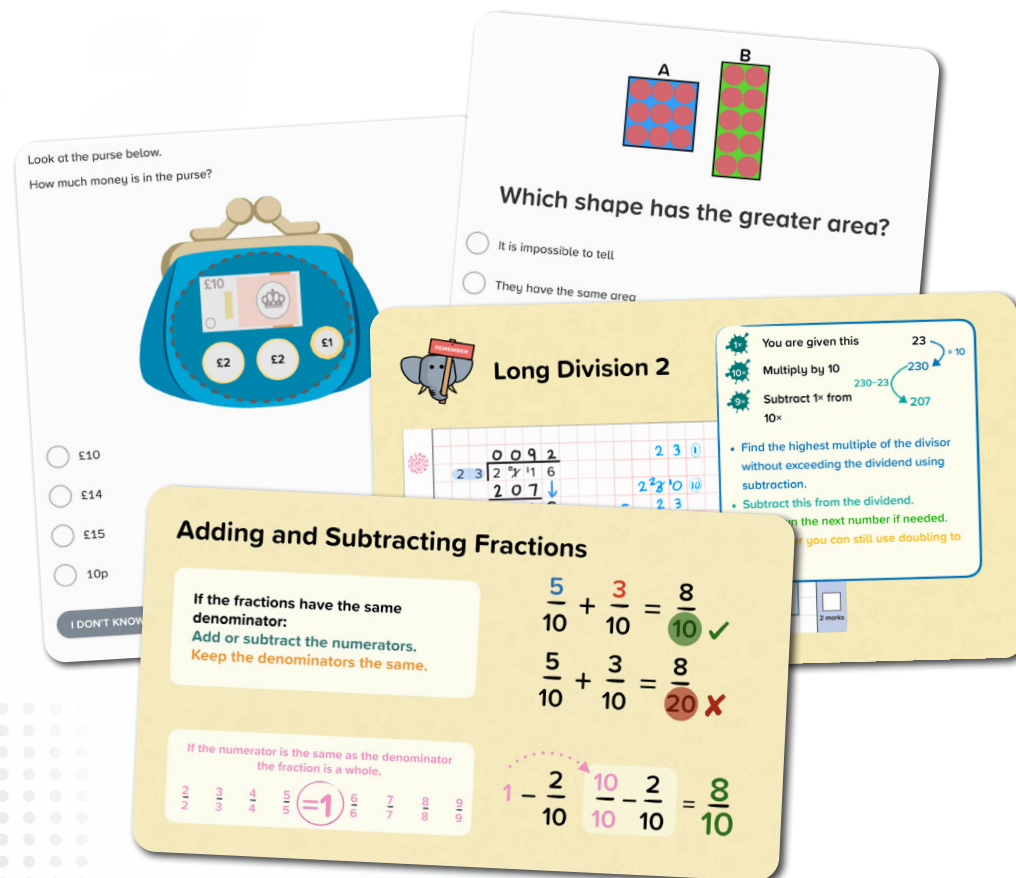


[Download course content](#)

Mathematics Courses

Primary White Rose Mathematics

This mapping document shows how our content aligns with the White Rose scheme of learning.



White Rose Mathematics - Year 2

White Rose Mathematics - Year 3

White Rose Mathematics - Year 4

White Rose Mathematics - Year 5

White Rose Mathematics - Year 6

[Download course content](#)

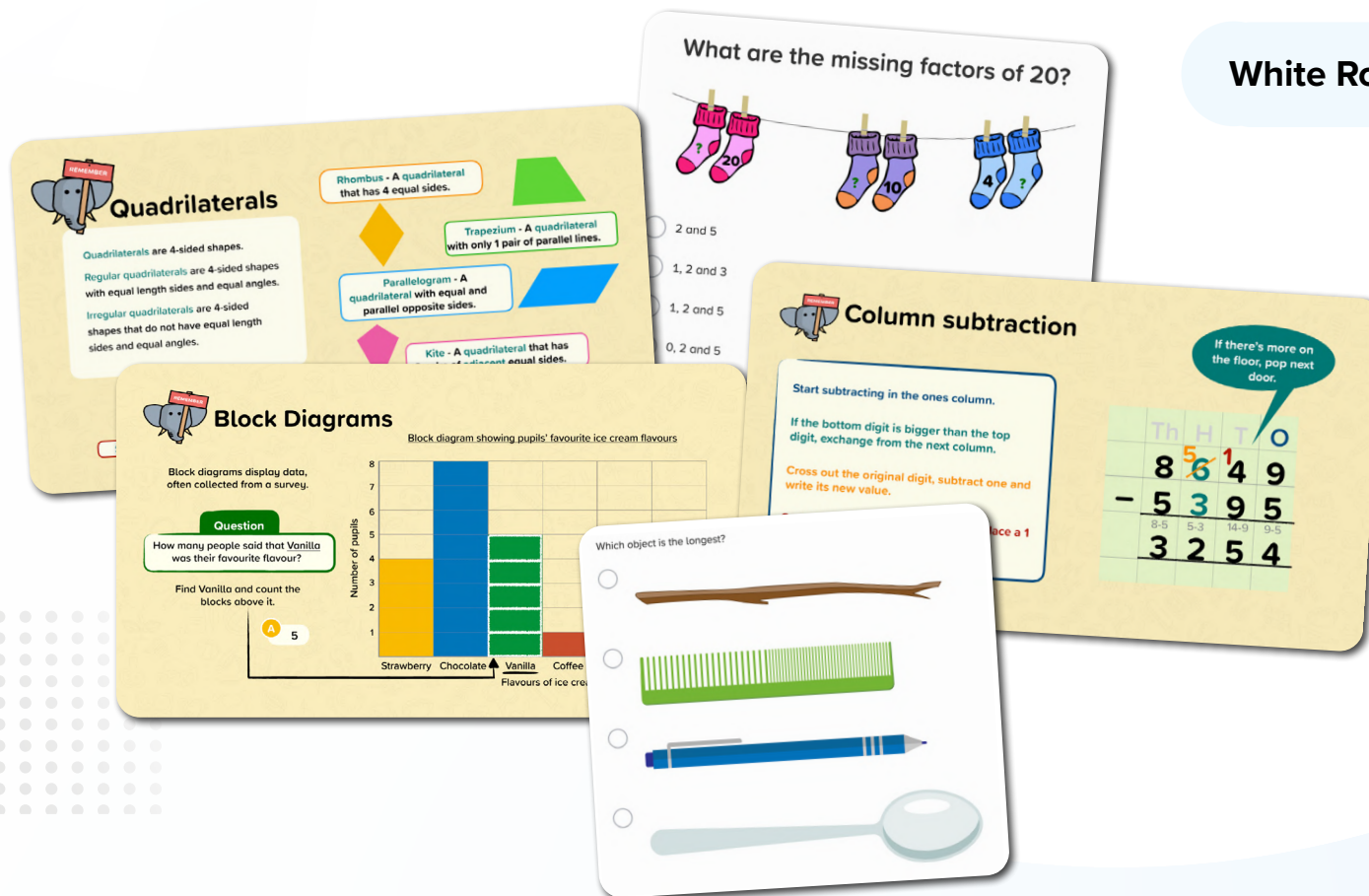
Mathematics Courses

Primary White Rose Mathematics

This mapping document shows how our content aligns with the White Rose scheme of learning.

White Rose Mathematics - Mixed Age Year 3 & 4

White Rose Mathematics - Mixed Age Year 5 & 6



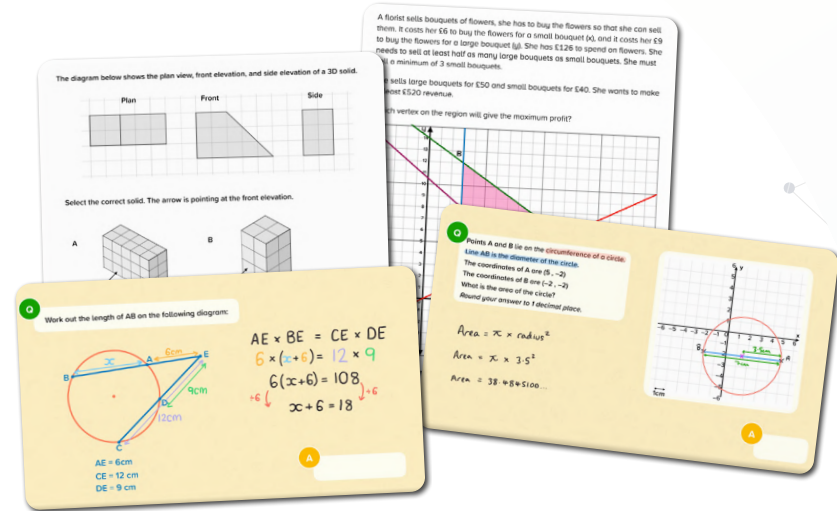
Download course content

Mathematics Courses

Secondary

These courses have been created by our team of experienced secondary mathematics teachers.

Edexcel Specification: 1MA1
AQA Specification: 8300
OCR Specification: J560
Eduqas Specification: C300P



Mathematics Secondary (F)



Mathematics – Bridge to A-Level



Mathematics Secondary (H)



**Mathematics –
Number & Measure Level 1: Edexcel**

Specification: ANM10



Mathematics Secondary (F+)



**Mathematics –
Number & Measure Level 2: Edexcel**

Specification: ANM20

[Download course content](#)

Mathematics Courses

Financial Maths

This course covers skills relating to financial maths; including underlying mathematical skills as well as understanding of everyday finance and financial products.



Financial Maths

Here is a part of a debit card statement.

BANKKEYS
Current Account Statement
Account number: 017832723478
Sort Code: 40-00-15

Date	Description	£ Out
19th Oct	Barista Coffee - Salary	£125.00
19th Oct	Best Gym	£34.50
20th Oct	PizzaPalace	£19.95
21st Oct	Big Bank - Cash Deposit	£50.00
22nd Oct	Denim Direct	£65.99

How much money was paid into the account?
£ _____

Lords FlexSuper
✓ £2.50 a month
✓ Free European travel insurance
✓ Free roadside breakdown cover

Lords FlexPremier
✓ £4 a month
✓ 2% cashback on utility bills
✓ 1% cashback on mobile bills and gym memberships

Some current accounts may have a monthly fee, but come with benefits which may include things like:

- Breakdown cover
- Travel insurance
- Cashback

There may be a requirement on these accounts to pay a minimum amount in to it every month.

calculated every month
the changes in prices
services. Prices are
areas in the UK,
regional differences

ded are known as
oods. It is designed
things people
around 700
n the basket, under
ood, clothing,
household utilities.

Inflation Measures:
Consumer Price Index (CPI)
Retail Price Index (RPI)

The basket of goods is regularly updated.
Recently taken from...

Bryn wants to change some pounds to euros for his holiday to Italy. He has £300 to exchange.

EUROS ARE US!

Amount to exchange	Rate
£1 - £99.99	1.1598
£100 - £499.99	1.1619
£500 - £10,000	1.1623

How many euros will he get?
You do not need to include units in your answer.

Budgeting

Budgeting can help with managing your money. Every month there are essential things to spend money on, these are usually:

- Rent or mortgage
- Bills (gas, electricity and water)
- Council Tax
- Internet and television
- Car or travel expenses
- Food

Any left over money is called your disposable income.

Electricity Co.
Name and address: Dr. Kate Jones, 12 Woodford Drive, Somersby, SB3 8PY
Statement Date 13th April
Bill Period: 12/03/24 - 12/04/24
Account Balance: £35.23 CR
Electricity Costs: £87.05 Inc. VAT at 5%

This means the account has credit, possibly from a previous overpayment

[Download course content](#)

Mathematics Courses

Secondary White Rose

This mapping document shows how our content aligns with the White Rose scheme of learning.

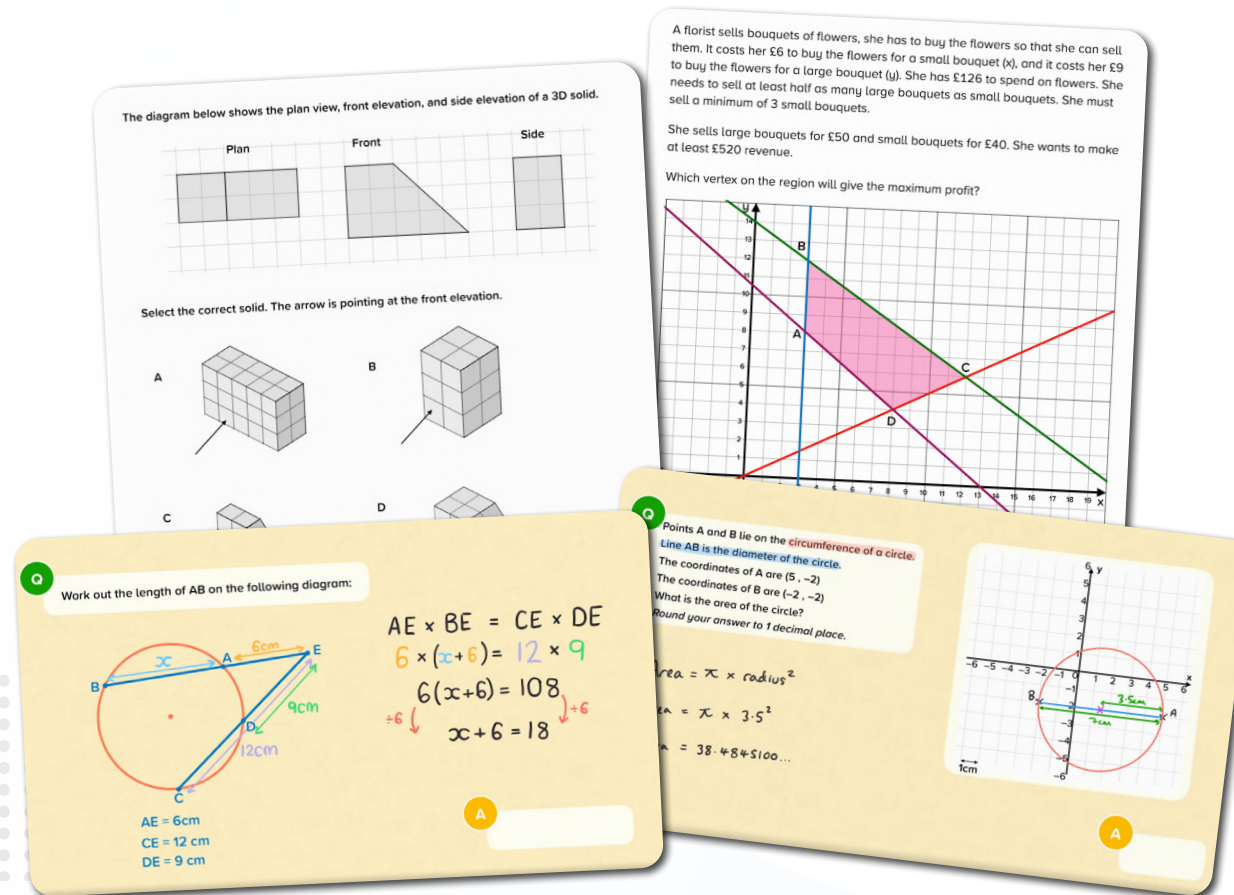
White Rose Mathematics - Year 7

White Rose Mathematics - Year 8

White Rose Mathematics - Year 9

White Rose Mathematics - Year 10

White Rose Mathematics - Year 11

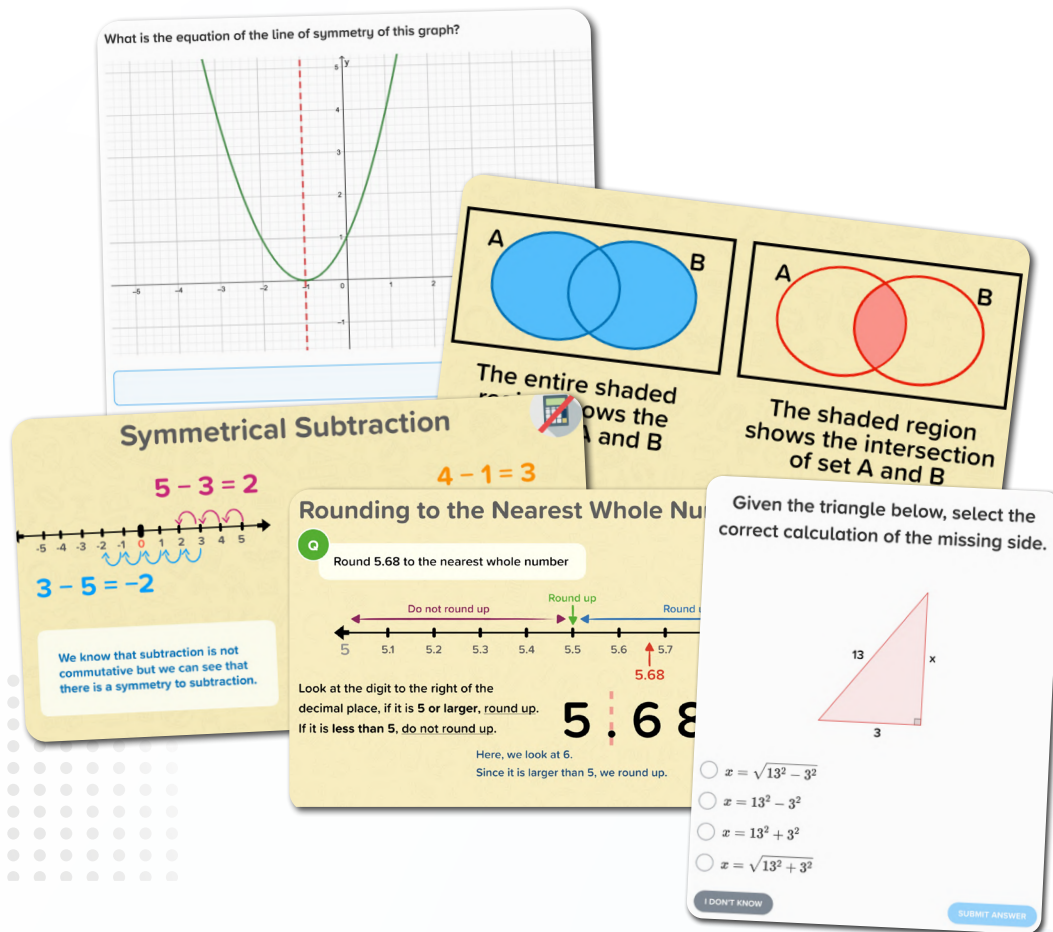


Download course content

Mathematics Courses

IGCSE

These courses have been created by our team of experienced secondary mathematics teachers.



Mathematics IGCSE: Cambridge (Core)

Specification: 0580/0980



Mathematics IGCSE: Cambridge (Extended)

Specification: 0580/0980



Mathematics IGCSE: Edexcel (F)

Specification: 4MA1



Mathematics IGCSE: Edexcel (H)

Specification: 4MA1

[Download course content](#)

Mathematics Courses

Further Education GCSE

Our FE GCSE courses are adapted from our secondary courses, with adult learners in mind. The courses have diagnostics which are designed to quickly identify a learner's strengths and weaknesses.

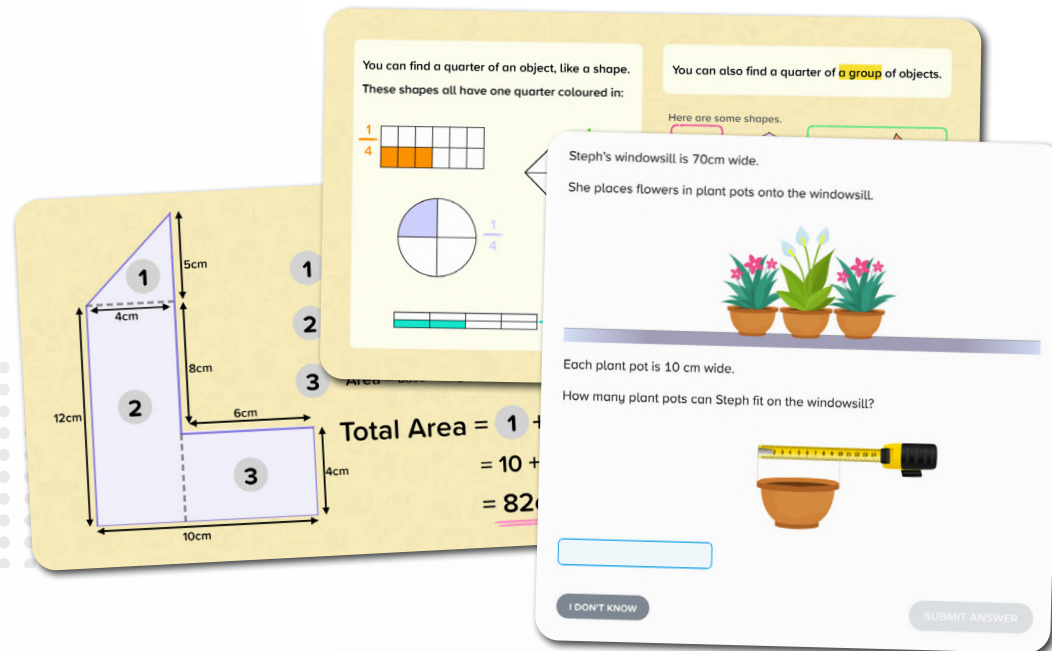
Courses suitable for all GCSE specifications:

Edexcel: 1MA1 (QAN: 601/4700/3)

AQA: 8300 (QAN: 601/4608/4)

OCR: J560 (QAN: 601/4606/0)

Eduqas: C300P (QAN: 601/5503/6)



FE – Mathematics GCSE (F)



FE – Mathematics GCSE (H)



**Mathematics –
Number & Measure Level 1: Edexcel**

Specification: ANM10



**Mathematics –
Number & Measure Level 2: Edexcel**

Specification: ANM20

[Download course content](#)

Mathematics Courses

FE – Mathematics GCSE: WJEC

These courses cover the WJEC GCSE Maths Foundation specification with a 'quickstart' diagnostic to start off recommendations, and focussed diagnostics on foundation/intermediate cross over topics and intermediate/higher cross over topics.



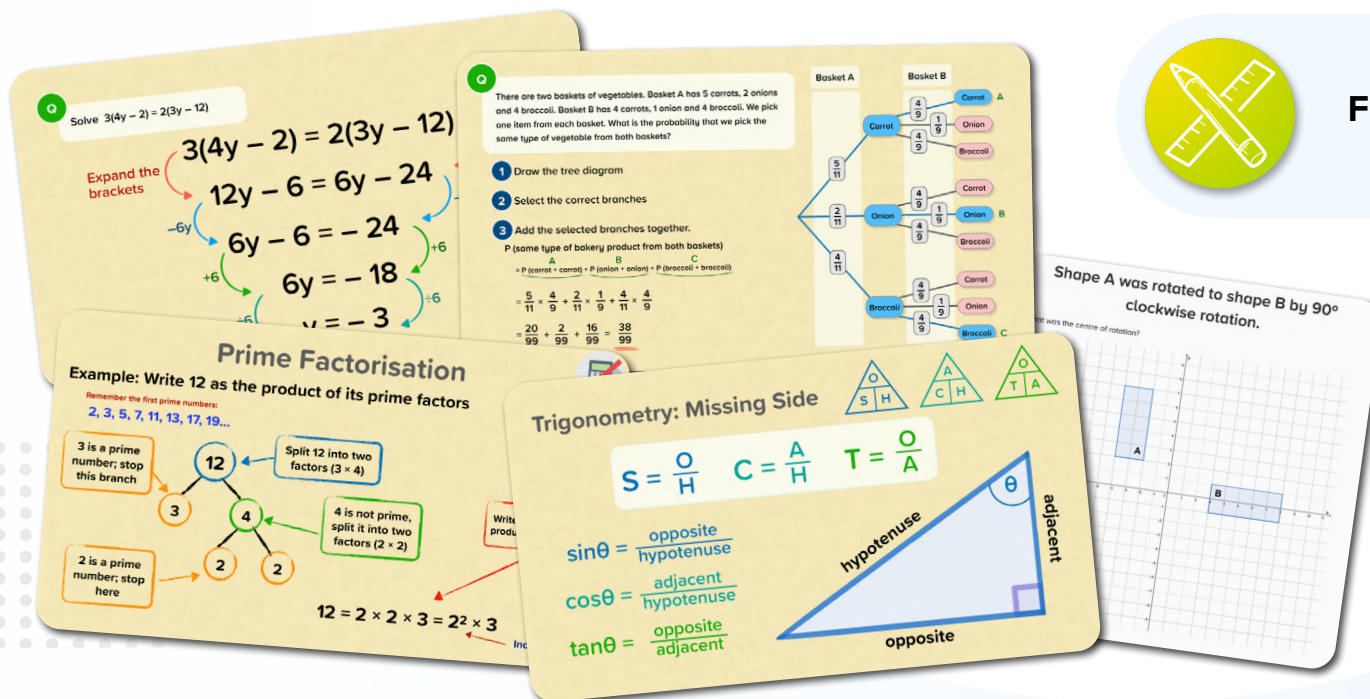
FE – Mathematics GCSE: WJEC (F)



FE – Mathematics GCSE: WJEC (I)



FE – Mathematics GCSE: WJEC (H)

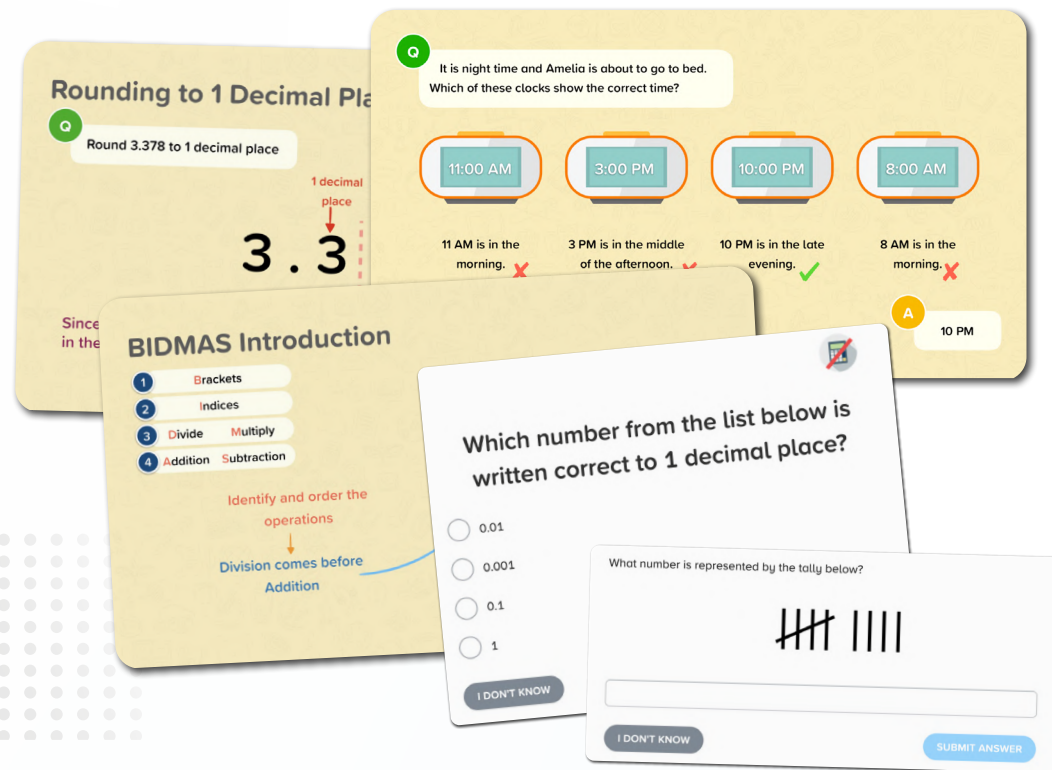


[Download course content](#)

Mathematics Courses

Functional Skills

Our functional skills courses cover the knowledge and skills required for the functional skills qualifications, mapped to the national requirements outlined by the DfE.



FE – Mathematics Functional Skills (Entry 1)



FE – Mathematics Functional Skills (Entry 2)



FE – Mathematics Functional Skills (Entry 3)



FE – Mathematics Functional Skills (Level 1)



FE – Mathematics Functional Skills (Level 2)

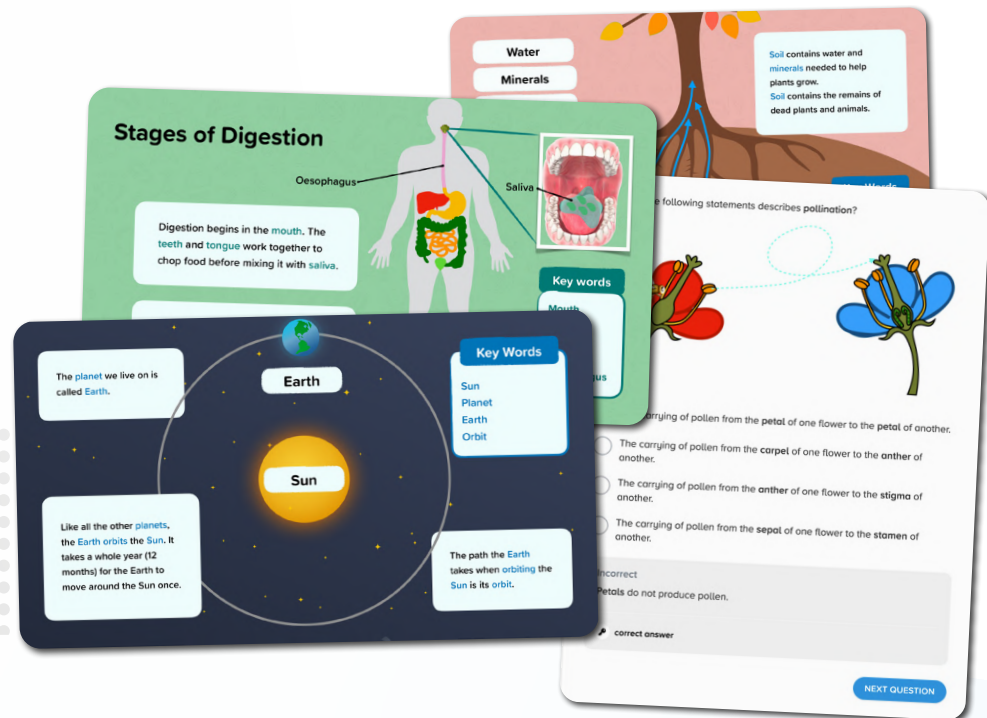
[Download course content](#)

Science Courses

Primary

Our science courses are aligned to the English national curriculum for each specific year group. We also have a KS2 course that combines all of the science content from our year 3-6 courses.

There are + versions of the year 5 and KS2 courses that contain nuggets on reproduction and human life cycles.



Primary – Year 3 Science



Primary – Year 4 Science



Primary – Year 5 Science



Primary – Year 6 Science



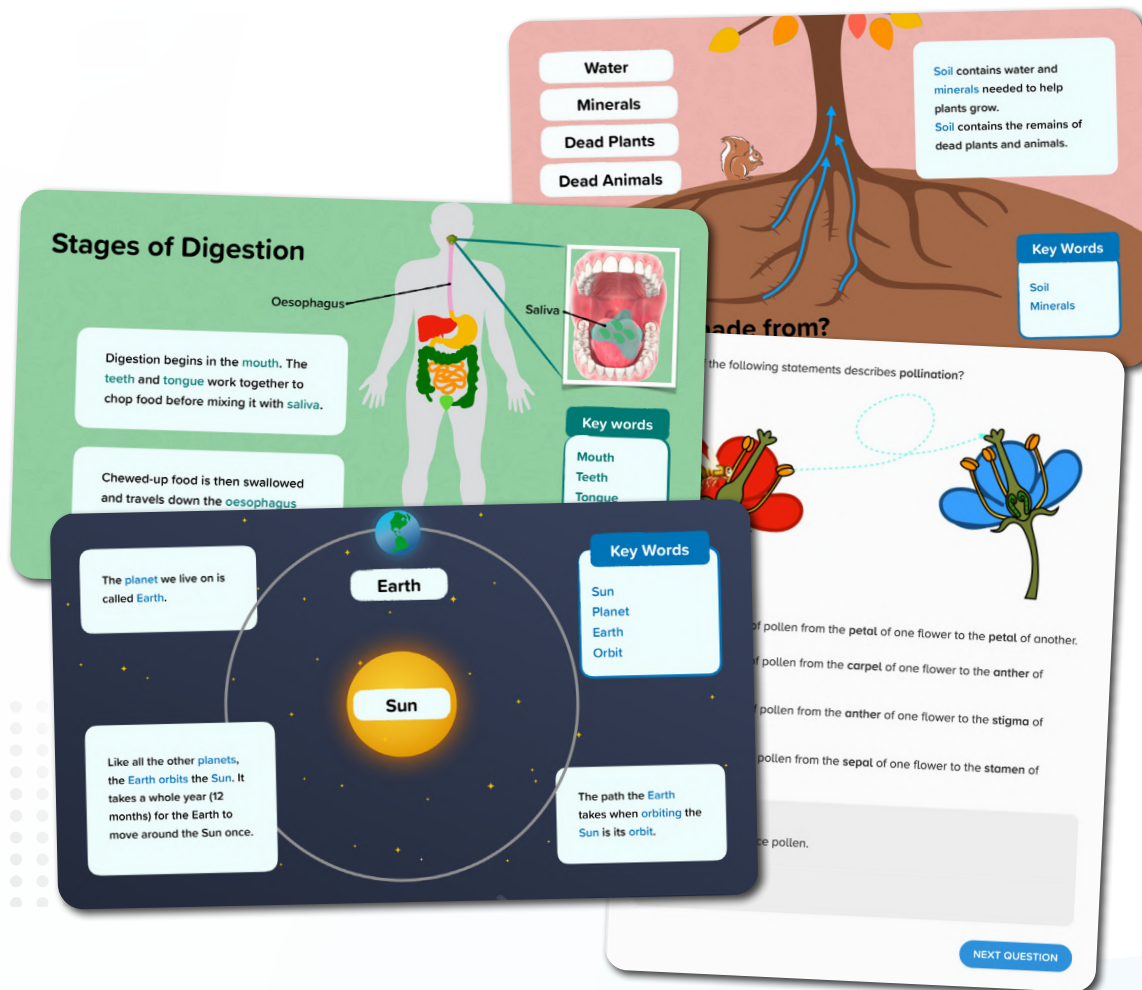
Primary – KS2 Science

[Download course content](#)

Science Courses

Primary White Rose Science

This mapping document shows how our content aligns with the White Rose scheme of learning.



White Rose Mathematics - Year 3

White Rose Mathematics - Year 4

White Rose Mathematics - Year 5

White Rose Mathematics - Year 6

[Download course content](#)

Science Courses

KS3

This map show how our KS3 Biology, Chemistry and Physics courses are aligned to the KS3 national curriculum. You can edit each of these courses to match your KS3 schemes of work.



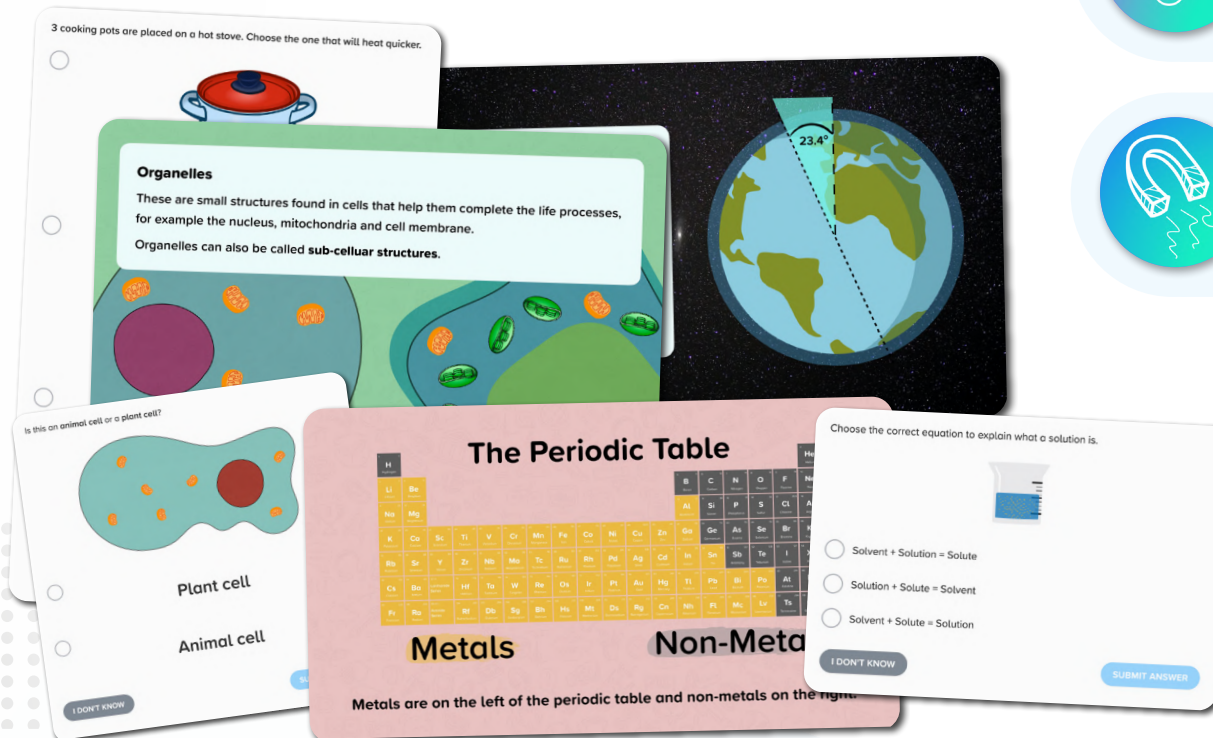
Science – KS3 Biology



Science – KS3 Chemistry



Science – KS3 Physics

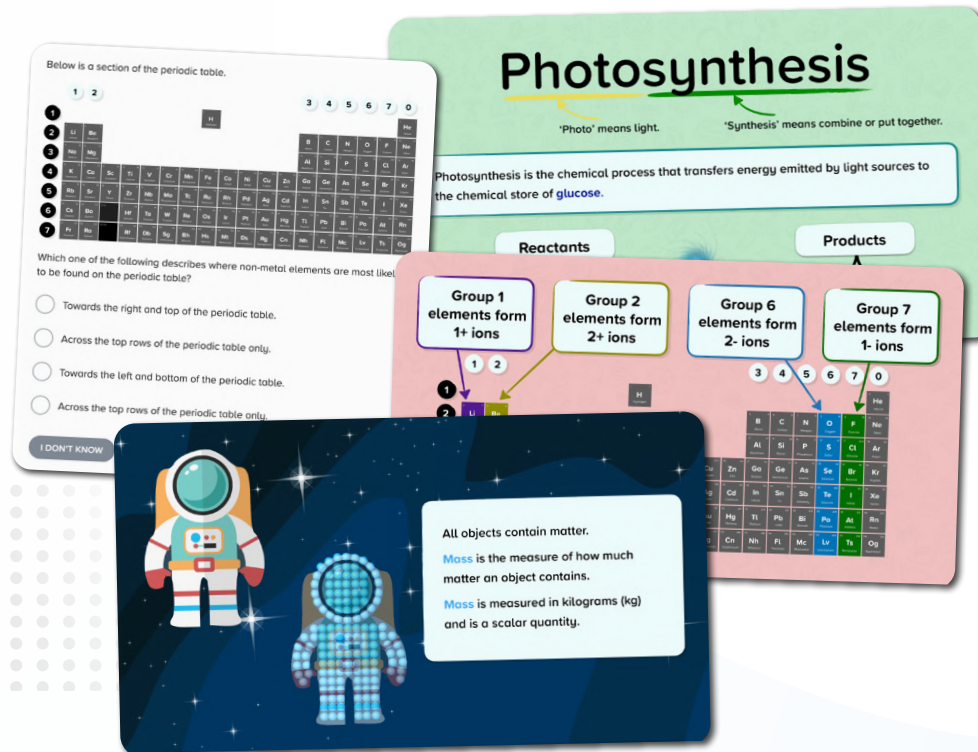


[Download course content](#)

Science Courses

GCSE

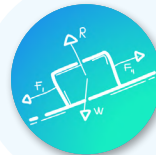
Our science courses have been created by our team of experienced secondary science teachers to align with your exam board. To get a more in-depth view of the content and structure of these courses, download our Secondary Science Course Content Guide from the customer hub.



Science – GCSE Biology



Science – GCSE Chemistry



Science – GCSE Physics

[Download an example of our course content](#)

Science Courses

Science Courses - ELC

Mapped to AQA ELC Science.

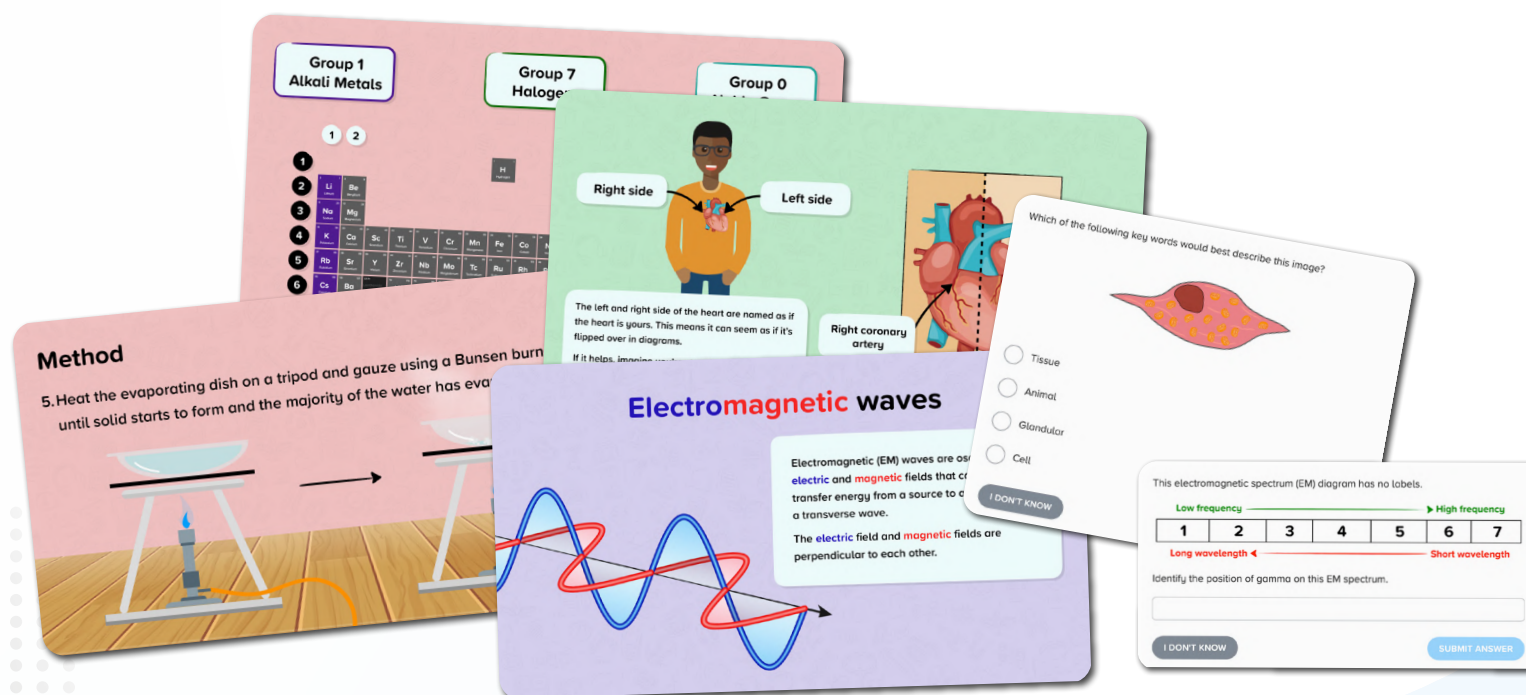
This course is designed for students studying both ELC and GCSE.

AQA: 5960

QAN: 601/7522/9ng



Science ELC+ (Double Award): AQA



[Download course content](#)

Science Courses

Working Scientifically Secondary

This course includes scientific skills and ideas that flow through all scientific disciplines. It is suitable for study alongside secondary science subjects.



Working Scientifically Secondary

Card 1: Bunsen burner parts and safety

Barrel or Chimney
Collar
Air Hole
Gas Inlet

It is important to know the names of the parts on the Bunsen burner. This will make it easier to safely operate it.

The barrel or chimney can get very hot during use, so the burner should be carried by the base to avoid burns.

The collar controls the size of the air hole, this is how the size & temperature of the flame can be regulated.

Card 2: Precision and Accuracy in Archery

Consider an archery player:

The arrows are considered to be **precise** if they are close together.

are considered to be **accurate** if they are near the centre of the bullseye.

like the results in an experiment, can be **precise** without being **accurate**.

Not Accurate Not Precise
Not Accurate Precise
Accurate Not Precise
Accurate Precise

Card 3: Photosynthesis Investigation

Let's take a look at the classic investigation into the effect of light intensity on the rate of photosynthesis.

00:03:00

70 80 90 100 cm

Card 4: Neutralisation Experiment

Medium

Acid
Base

Salt + Water

Hazard: Using dilute hydrochloric acid in a neutralisation experiment.

Risk: **Medium** – The acid is mildly corrosive and could cause skin or eye irritation if spilled. The risk is higher if protective equipment is not used.

[Download course content](#)

Science Courses

Prepare for A-Level Science

These courses covers the key concepts and foundational knowledge to aid transition and preparation to study science at A-level.



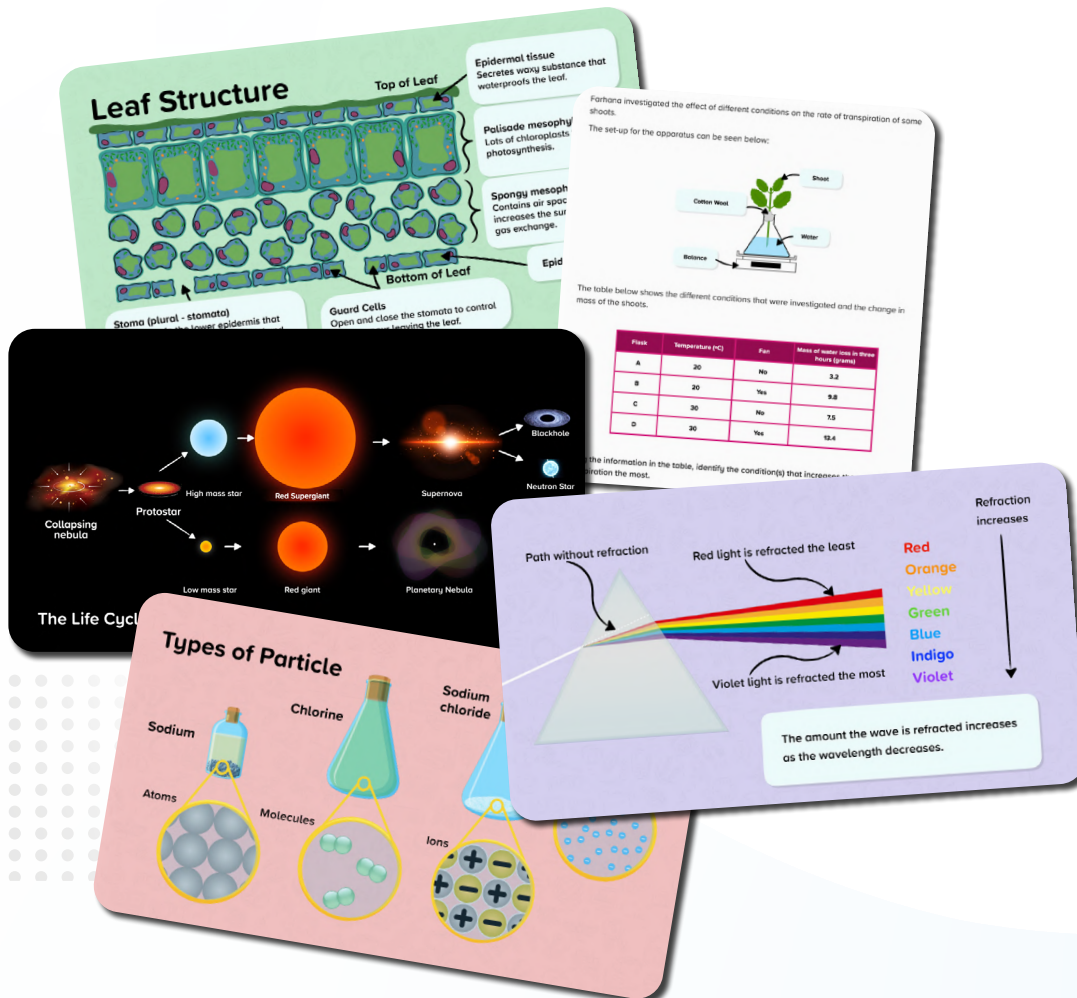
Prepare for A-Level: Biology



Prepare for A-Level: Chemistry



Prepare for A-Level: Physics



[Download course content](#)

Secondary Geography Courses

AQA

This course covers the huge variety of both physical and human geographical content. They also cover specific geographical skills, including fieldwork and cartographical skills.



Geography GCSE: AQA

Specification: 8035



[Download course content](#)

Secondary Geography Courses

Edexcel

These courses cover a huge variety of both physical and human geographical content. They also cover specific geographical skills, including fieldwork and cartographical skills.



Geography GCSE: Edexcel A

Specification: 1GA0

QAN: 601/8134/5



Geography GCSE: Edexcel B

Specification: 1GB0

QAN: 601/8135/7



[Download course content](#)

Secondary Geography Courses

Eduqas

These courses cover a huge variety of both physical and human geographical content. They also cover specific geographical skills, including fieldwork and cartographical skills.



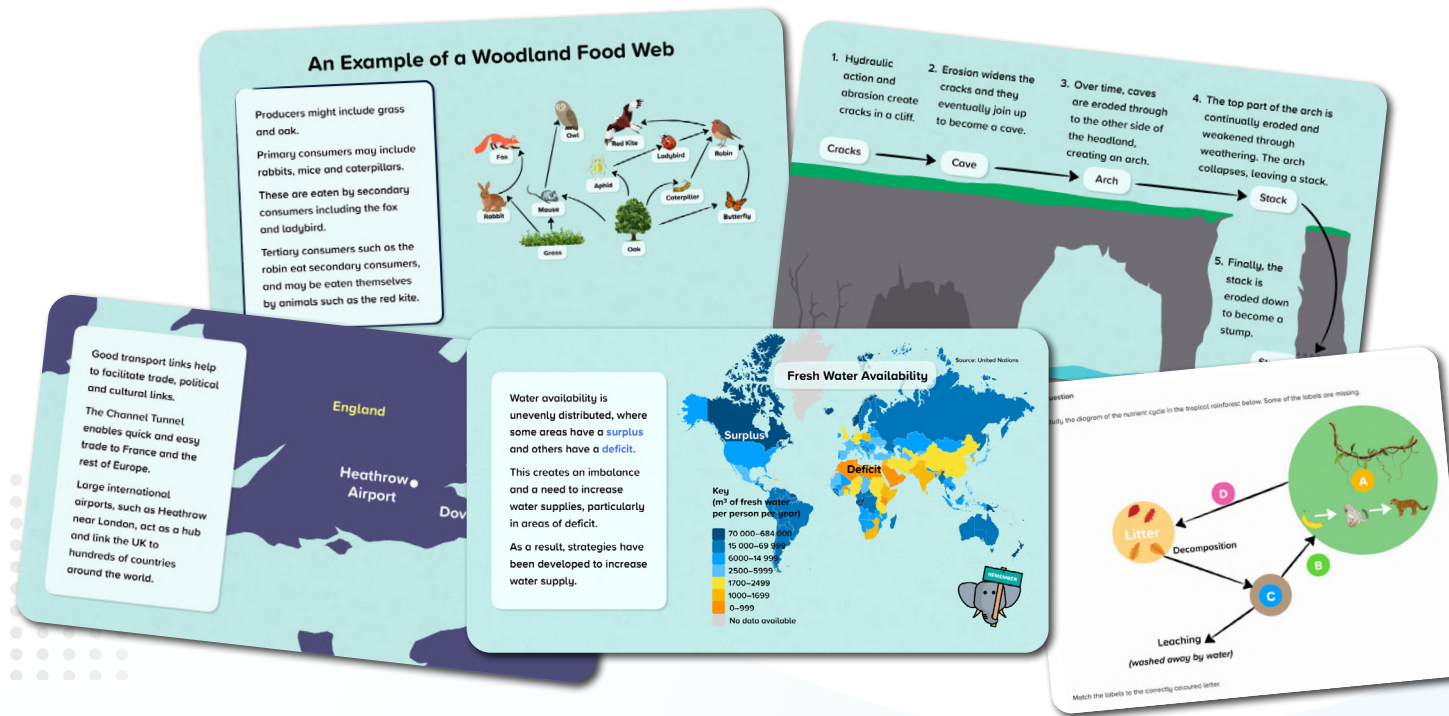
Geography GCSE: Eduqas A

Specification: C111QS
QAN: 601/8152/7



Geography GCSE: Eduqas B

Specification: C112QS
QAN: 601/8153/9



[Download course content](#)

Secondary Geography Courses

OCR

These courses cover a huge variety of both physical and human geographical content. They also cover specific geographical skills, including fieldwork and cartographical skills.



Geography GCSE: OCR A

Specification: J383
QAN: 601/8310/X



Geography GCSE: OCR B

Specification: J384
QAN: 601/8224/6

Human Factors

The growth of cities is occurring in most parts of the world. Cities need hard surfaces for roads and buildings which increases the amount of impermeable surfaces. This is increasing the risk of flooding.

Physical Factors: Processes

Chalk (more resistant) → Flamborough Head

Boulder Clay (less resistant)

North Sea

Hull

Spurn Head

Silt

The boulder clay along this coastline is also prone to slumping. The clay becomes saturated in heavy rain when water enters cracks. This added weight makes it slump.

Like the yolk of an egg, the Earth has the core at the centre. This is the hottest part of the Earth.

The core can be divided into the inner and outer core.

The inner and outer core are both made of iron and nickel, but the inner core is a solid layer and the outer core is liquid.

The mantle that surrounds the core is made of liquid rock called magma.

The crust is the outer layer of the Earth and is the thinnest layer.

Scientific Research

When preserved as unpolluted and unspoiled, cold environments are outdoor laboratories for scientific research on important global issues such as climate change. Access to undisturbed plant and animal communities for scientific research is crucial.

Many people argue that we should always have some places in the world completely natural so we can understand and remember how much developed places have changed over time.

The table below shows the amount of carbon dioxide produced per kilogram of produce. Study the table.

Food	Origin & Transport	Amount of CO ₂ per KG of produce
Apples	UK: Road	0.3
Apples	New Zealand: Ship	0.6
Lettuce	UK: Road	0.6
Lettuce	Spain: Road	1.8
Asparagus	UK: Road	1.1
Asparagus	Peru: Flight	18.5

How much CO₂ is produced per kg of lettuce when imported from Spain?

Type your answer in the box below, e.g. 1.2

Secondary Geography Courses

IGCSE

This course is suitable for learners working towards an Essential Skills qualification in Wales or Northern Ireland.



Geography IGCSE: Cambridge



Geography IGCSE: Edexcel



Geography IGCSE: Oxford AQA

[Download course content](#)

Secondary Physical Education Courses

GCSE

These courses have been created by our team of experienced secondary Physical Education teachers. Each set of courses are separated into topic strands with a wide range of practical examples, data analysis and topic nuggets available throughout.



Physical Education GCSE: Edexcel

Specification: 1PE0



Physical Education GCSE: WJEC

Specification: 3550QS



Physical Education GCSE: AQA

Specification: 8582



Physical Education GCSE: WJEC (Short Course)

Specification: 3555QT



Physical Education GCSE: OCR

Specification: J587



Physical Education IGCSE: Cambridge

Specification: 0413

[Download course content](#)

Secondary Physical Education Courses

Vocational

These courses have been created by our team of experienced secondary Physical Education teachers in line with the Sport BTEC and Sport Science schemes of learning.



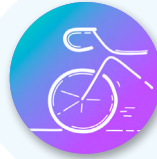
Sport BTEC Level 2: First Award



Sport BTEC Level 2: First Diploma



Sport BTEC Level 2: Tech Award



Sport BTEC Level 1: Introductory



Sport BTEC Level 2: First Certificate



Sport BTEC Level 2: First Extended Certificate



Sport Science Level 2: Cambridge National


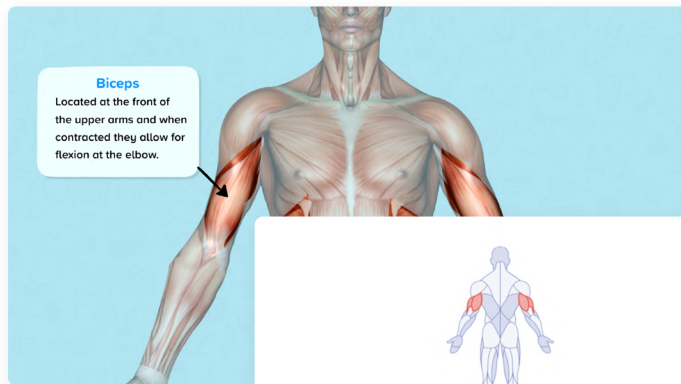
Specification: J828

[Download course content](#)

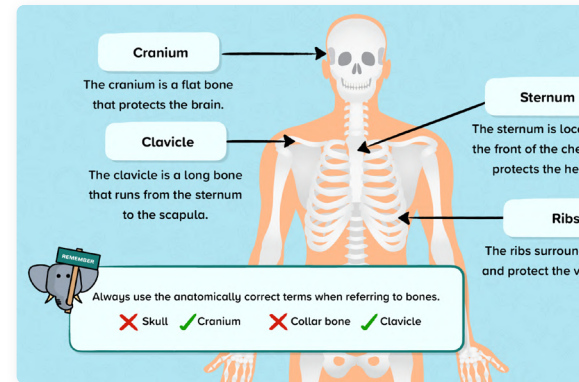
PE Special Feature!

Recall and Review Nuggets

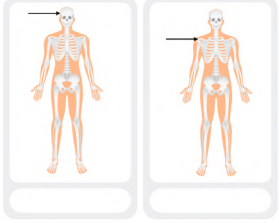
Testing specific A01 subject knowledge quickly identifying misconceptions and gaps in learning to the teacher.



What is the name of the muscles identified in the picture?

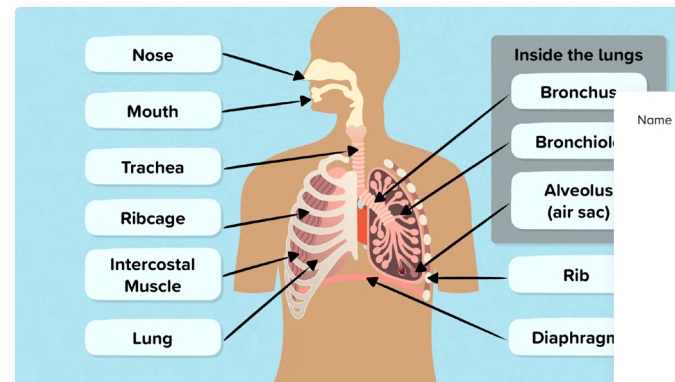


Label the correct bone identified by the arrow.

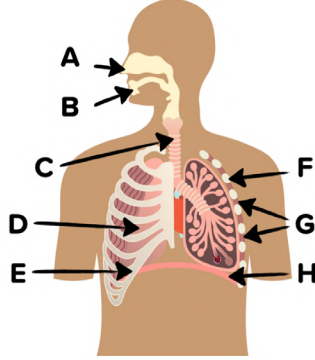


Possible Answers

Sternum	Cranium	Clavicle
Vertebrae	Scapula	



Name the part of the respiratory system identified by the label B.



Secondary Digital Skills

This course explores the key skills that learners will need for life and work, covering using devices and handling information, creating and editing, communicating, transacting and being safe and responsible online.



Secondary Digital Skills

Identifying Appropriate Websites

Some websites will be more relevant to your search than others.

It is important to identify which websites are appropriate for your search and which ones have an **agenda**.

Websites with an **agenda** might be trying to sell you something or may not be relevant to your search at all.

Spending a long time on a device can cause physical problems such as pain, discomfort and injury.

Common problems include:

- Eyestrain
- Headaches
- Muscle pain
- Repetitive strain injury

Which of the following could a spreadsheet be used for?

- ☐ creating a slideshow presentation for work
- ☐ scheduling an email
- ☒ carrying out data calculations using formulae
- ☐ writing a newspaper article

Download course content

FE Digital Skills

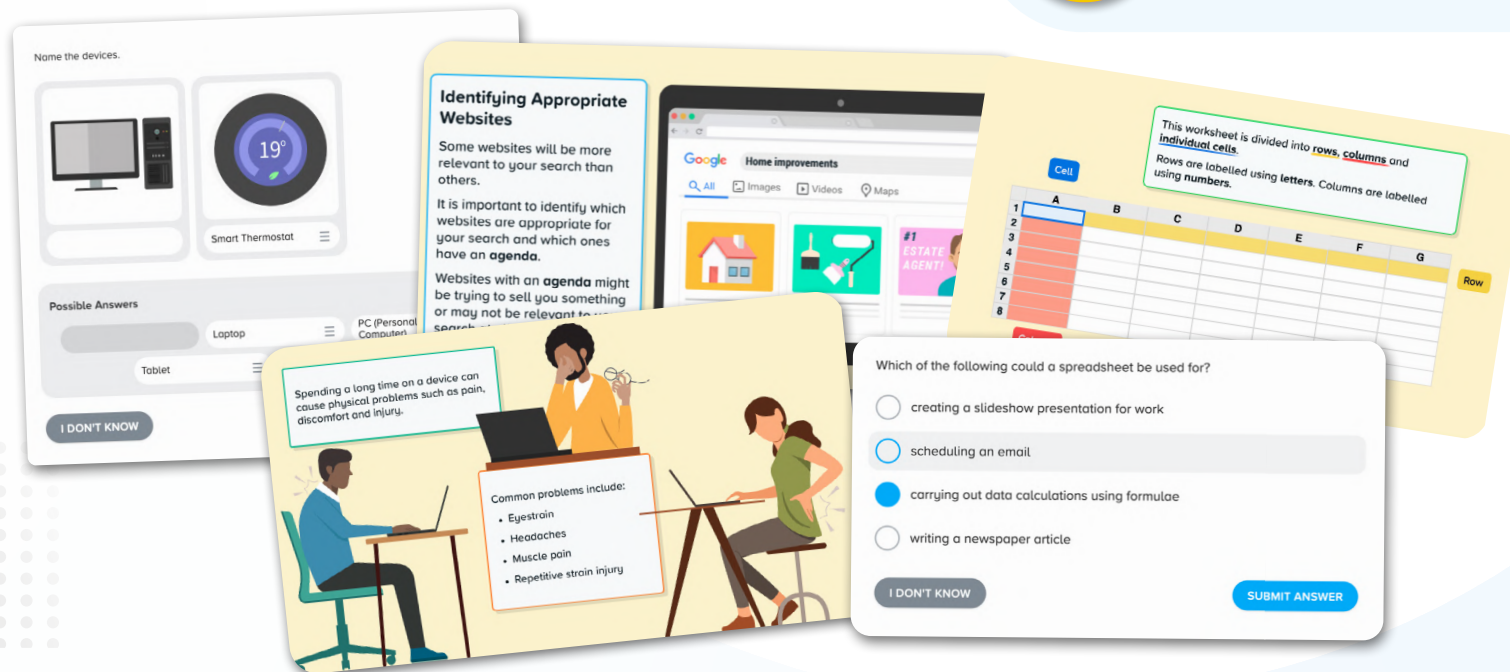
These courses explore the key skills that learners will need for life and work, covering using devices and handling information, creating and editing, communicating, transacting and being safe and responsible online.



FE – Essential Digital Skills (Entry 3)

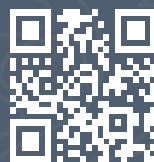


FE – Essential Digital Skills (Level 1)



[Download course content](#)

Questions?
Email support@century.tech



CENTURY