

Course Mapping Guide

International English

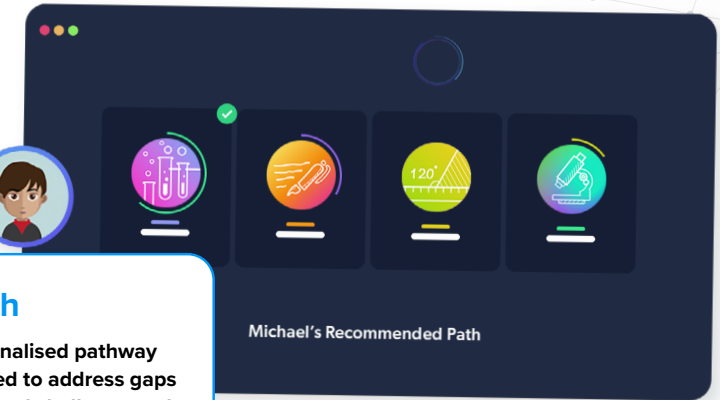
About CENTURY

CENTURY is a learning platform that uses artificial intelligence to personalise learning for every learner. Our team of experienced teachers have created all of our content for English, maths, science, geography and physical education from years 2 to 11, as well as functional skills content for post-16 learners. All courses are aligned to the national curriculum and national standards.

- ✓ Learning materials and questions for primary, secondary and post-16 learners
- ✓ Tailored to each learner's skills and knowledge
- ✓ Powered by the world's leading adaptive learning platform
- ✓ Web-based learning for tablets, laptops and desktops



How does CENTURY work?



Diagnostics

Learners begin by completing diagnostics that quickly identify knowledge gaps and misconceptions, and help CENTURY recommend the best learning materials for each individual learner.

Recommended Path

This constantly adapting personalised pathway contains micro-lessons designed to address gaps in knowledge, provide stretch and challenge and promote long-term memory retention.

Leadership Dashboard

Senior and middle leaders get an overview of performance and engagement on a subject, class and learner level.

Achievements

Learners get rewarded with badges and streaks for completing micro-lessons or for using CENTURY over a certain period of time to increase their motivation and engagement.

Automated Marking

Teachers can view data in real time, to help quickly identify which learners require additional support or further stretch.

Teacher Dashboard

Use the markbook to monitor individual learners and whole-class trends with a range of dashboards.

Learner Dashboard & Guardian Portal

Learners can identify their strengths and areas for improvement. Parents and guardians can monitor their learner's progress, completed work, and see work set.



International English Course Mapping



Want to see this in action?

Watch a CENTURY platform walkthrough

TeacherGENie™

Making generative AI work for teachers

CENTURY has always led the way in embedding AI into education through our teaching and learning platform. TeacherGENie™ goes beyond using generative AI alone, as we know the true value of these tools can only be realised when they are combined with quality, teacher-made resources.

These worksheets, consisting of five questions, can be used:

- ✓ in class as a starter to assess prior knowledge,
- ✓ as a plenary to check learning,
- ✓ as part of home learning,
- ✓ as a great revision tool in the run up to exams.

With the 'Copy question' button, you can easily copy and paste the generated content to use elsewhere.

By grounding generative AI in expertly crafted learning resources, we're making sure that tools such as TeacherGENie™ deliver meaningful, classroom-ready materials that genuinely support teaching goals.

The screenshot displays the TeacherGENie interface for a Year 6 class. The left sidebar shows navigation options: Overview, Assignments, Courses, Markbook, Nuggets, Interventions, and TeacherGENie (highlighted). The main area shows a worksheet titled 'Primary - Year 6 SPaG / Word Classes / Possessive Pronouns [PSPG1.13]'. It includes a 'Show Answers' toggle and buttons for 'QUESTIONS SHEET' and 'TEACHER SHEET'. The worksheet contains five questions:

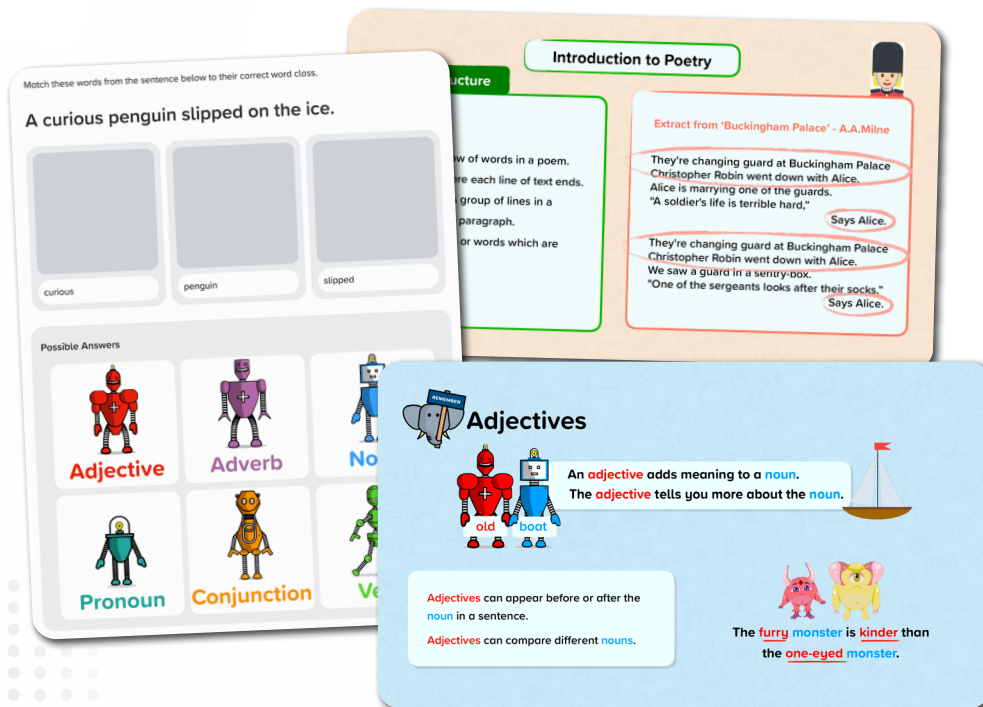
- Question 1:** Identify and write the possessive pronoun in this sentence. The toy belongs to James, so it is definitely his.
- Question 2:** What is the possessive pronoun in the sentence below? The house at the end of the street is theirs.
- Question 3:** Fill in the blank with the appropriate possessive pronoun. The bicycles belonged to both Emma and Olivia. The bicycles were _____.
- Question 4:** Choose the word that cannot be used to show ownership.
 - him
 - yours
 - mine
 - ours
- Question 5:** Which option correctly describes the function of a possessive pronoun?
 - is the name used for specific people, places, things or ideas.
 - is a word that is spelt the same but has a different meaning.
 - shows that something belongs to someone or something.
 - is a word that links two words or phrases together.

A red arrow points from the 'Copy question' button next to Question 1 to a separate sheet titled 'Possessive Pronouns - Teacher Sheet' which contains the same five questions.

English Courses

Primary - SPaG

Our primary English offering includes both SPaG and reading courses for years 2 to 6. There is a specific SPaG course for each year group, but they also include prerequisite learning from previous years.



Primary – Year 2 SPaG



Primary – Year 3 SPaG



Primary – Year 4 SPaG



Primary – Year 5 SPaG



Primary – Year 6 SPaG

[Download course content](#)

English Courses

Primary Reading

We have a reading comprehension course for years 3 and 4, as well as a separate reading course for years 5 and 6 which focuses on specific reading skills.



Primary – Year 3-4 Reading Comprehension



Primary – Year 5-6 Reading

Life Cycles of Plants and Animals

Butterflies don't start life as the beautiful winged creatures we all think of. They start life as an egg like many other insects, laid by an adult female butterfly. You can actually see the tiny caterpillar inside the egg of some species from this egg hatches a caterpillar, which is an eating machine! They spend most of their time eating in order to gain strength for the next phase. In fact, they normally eat the whole leaf they are hatched on. When they have reached their full size, they form themselves into a chrysalis, also known as a pupa. Inside their chrysalis, the caterpillar undergoes a complete transformation. It grows wings, new organs and then emerges fully formed as an adult butterfly.

Which statement includes two events?

- ☐ Caterpillars form themselves into a chrysalis. They then emerge as butterflies.
- ☐ From this egg hatches a caterpillar. Caterpillars are eating most of the leaf they are laid on.
- ☐ They start life as an egg like many other insects. They are laid by a female butterfly.
- ☐ Inside their chrysalis, the caterpillar undergoes a complete transformation.

YOUR TURN

Q Which word is a synonym of 'enchanted' in this sentence?

Everyone agreed that they were **enchanted** children. One had a bad word to say about them!

Naughty

Clever

Oliver balanced on the edge of his track. He reached around Henry's leg and pulled as hard as he could. Together, they wrestled one foot and then the other out of the thick mud. Henry was free.

Now for the bike. Henry took off his jacket and tied it around the back wheel. Using all their strength, the boys pulled hard and slowly freed the bike. Cold, tired, and caked in mud, the boys slowly wheeled the bike back over the track.

Henry and Oliver woke up early and ran downstairs to have their breakfast. The boys had heard about a new cycle track in the woods. They couldn't wait to try it out. They were so excited that they hadn't noticed it was raining. Outside, it was gushing down.

"We can't go out in this weather," said their mum. "It's far too wet. You'll have to wait until later."

"OK," said the boys. "We'll wait."

What were the boys excited about?

- ☐ playing in the rain
- ☐ trying out the new bike track
- ☒ waking up early
- ☐ eating their breakfast

Incorrect

This was not the reason that they were excited. Read the first paragraph carefully.

Correct Answer

NEXT QUESTION

English Courses

Secondary English Language KS3

Our KS3 English Language courses cover reading and writing skills across both fiction and non-fiction, including language, structure, analysis, text types and writing for purpose.



English Language KS3



English SPaG Secondary

The collage features several educational materials:

- Structuring your writing:** A worksheet with bullet points: "Use a range of sentence structures and sentence lengths." and "Use paragraphs to organise your writing." It includes a sample letter to "Dear Sir/ Madam" with annotations.
- Comparatives and Superlatives:** A worksheet explaining that comparatives are used to compare two things and superlatives are used to compare one thing with everything else in a group. It includes examples: "Jane is taller than John.", "She is the best sister!", "He is more intelligent than they first thought.", and "That is the worst smelling".
- Did you know?:** A note stating that most adjectives have three forms: the absolute, the comparative, and the superlative. It advises checking a dictionary for irregular patterns.
- CLEVER - adjective (C):** A section for a quiz.
- Choose the simile below:** A multiple-choice question with options: "The night sky was as black as coal.", "The sky was sunny and clear.", "There was a blanket of fog in the sky." (marked incorrect with a red X), and "It was such a sunny day. In fact, it was the sunniest day of the summer so far.".
- The four seasons can symbolise different stages of life:** A worksheet with illustrations and descriptions for Spring (childhood), Summer (adulthood), Autumn (old age), and Winter (death).
- Quiz Feedback:** A message stating "Incorrect" and explaining that the chosen option is a metaphor, not a simile, and advising to look out for words like "like" and "as" when deciding if a sentence includes a simile. It also shows a "correct answer" and a "NEXT QUESTION" button.

[Download course content](#)

English Courses

Secondary English Language GCSE

Our GCSE English Language courses cover reading and writing skills across both fiction and non-fiction, including language, structure, analysis, text types and writing for purpose.



English Language GCSE



English Language GCSE: AQA

Specification: 8700



English Language GCSE: Edexcel

Specification: 1EN0



English Language GCSE: Eduqas

Specification: C700QS



English Language IGCSE: Cambridge

Specification: 500



English Language IGCSE: Edexcel B

Specification: 4EB1



English Second Language IGCSE: Cambridge

Specification: 0510/0511



English SPaG GCSE

[Download course content](#)

English Courses

Secondary English Reading

These courses contain a selection of extracts taken from a range of texts, followed by reading questions which assess skills such as comprehension, inference, and analysing language and structure devices.



English Reading: Fiction & Nonfiction



English Reading: Gothic Fiction



English Reading: 19th Century Fiction



English Reading: Children's Classics

[Download course content](#)

English Courses

Secondary English Literature - Shakespeare

Our literature courses explore plot, characters, themes, context, language, structure, form, and are suitable for all exam boards.



English Literature – A Midsummer Night's Dream



English Literature – Macbeth



English Literature – Much Ado About Nothing



English Literature – Romeo and Juliet

[Download course content](#)

English Courses

Secondary English Literature – Modern Prose & Drama

Our literature courses explore plot, characters, themes, context, language, structure, form, and are suitable for all exam boards.



English Literature – An Inspector Calls



English Literature – Animal Farm



English Literature – Blood Brothers

[Download course content](#)

English Courses

Secondary English Literature – 19th-century Novels

Our literature courses explore plot, characters, themes, context, language, structure, form, and are suitable for all exam boards.



English Literature – A Christmas Carol



English Literature – Jekyll and Hyde



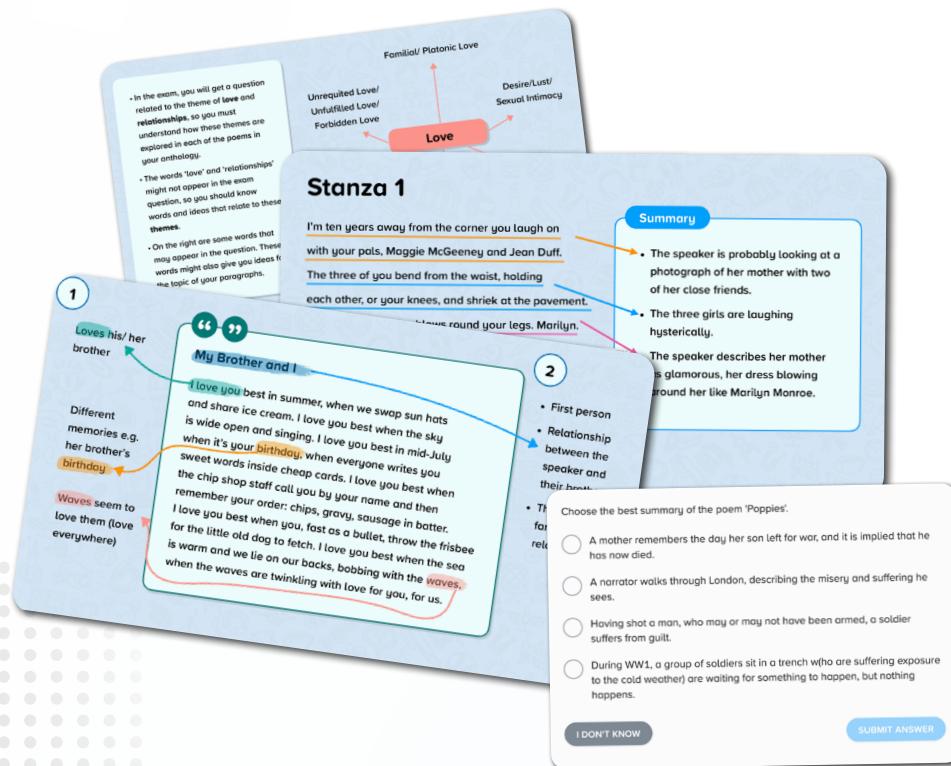
English Literature – The Sign of the Four

[Download course content](#)

English Courses

Secondary English Literature - Poetry

Our literature courses explore plot, characters, themes, context, language, structure, form, and are suitable for all exam boards.



**English Literature –
Love & Relationships: AQA**



**English Literature –
Power & Conflict: AQA**



**English Literature –
Power & Conflict: Edexcel**



English Literature – Unseen Poetry

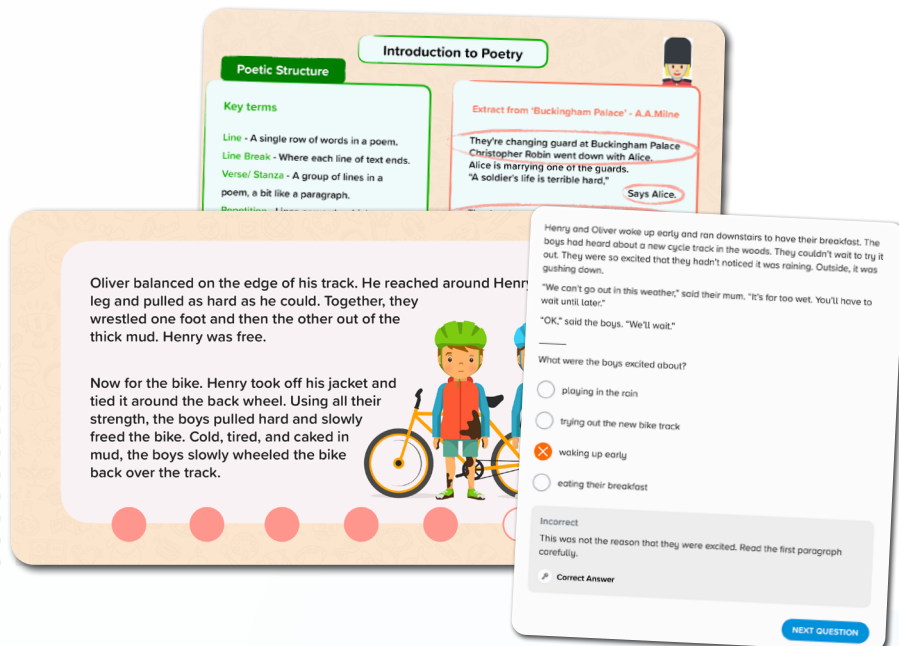
[Download course content](#)

English Courses

International Baccalaureate — PYP

Our primary English offering includes both SPaG and reading courses for grades 2 to 5. There is a specific SPaG course for each grade, but they also include prerequisite learning from previous grades.

We have a reading comprehension course for grades 2 and 3, as well as a separate reading course for grades 4 and 5 which focuses on specific reading skills.



Primary Reading Comprehension Grades 2 & 3



Primary Reading - Grades 4 & 5



Primary SPaG - Grade 1



Primary SPaG - Grades 2 & 3



Primary SPaG - Grades 4 & 5

[Download course content](#)

English Courses

International Baccalaureate — MYP

Our secondary English Language courses cover reading and writing skills across both fiction and non-fiction, including language, structure, analysis, text types and writing for purpose. There are separate SPaG courses which cover spelling, punctuation and grammar.



Lower MYP Reading



MYP (Lower)



MYP (Upper)



MYP SPaG

Structuring your writing

- Use a range of sentence structures and sentence lengths.
- Use paragraphs to organise your writing.

Dear Sir/ Madam,

I am writing to apply for the position of waiter at The Cafe on Saturdays.

Firstly, I would like to begin by stating how much I love The Cafe and that I would very much enjoy working here. I have always lived just down the road and have frequently visited The Cafe. The food is always delicious, the staff are unfailingly friendly and it is my favourite place to meet a friend for a cup of tea. I would make it my mission to help create the warm and welcoming atmosphere that I have always enjoyed so much.

Secondly, I think that I would make an excellent addition to the staff. I am a very confident and friendly person who has worked in the cafe industry for three years. I have been praised by the customers for my friendly service and my ability to help them. I am a hard-worker, organised and reliable. I am confident that I can contribute to the team and help create a welcoming atmosphere for the customers. I am confident that I can contribute to the team and help create a welcoming atmosphere for the customers. I am confident that I can contribute to the team and help create a welcoming atmosphere for the customers.

1 Comparatives and Superlatives

Comparatives are used to compare two things.

Superlatives are used to compare everything else.

Did you know?

Most adjectives have the comparative and superlative forms. However, some adjectives do not fit the regular pattern. These are called irregular adjectives.

CLEVER - adjective

Choose the simile below.

☐ The night sky was as black as coal.

☐ The sky was sunny and clear.

☒ There was a blanket of fog in the sky.

☐ It was such a sunny day. In fact, it was the sunniest day of the summer so far.

Incorrect

No, this is a metaphor, not a simile. Remember to look out for the words 'like' and 'as' when deciding if a sentence includes a simile!

correct answer

our seasons can symbolise different stages of life:

Spring

symbolises childhood: children are growing up, plants and animals begin to grow.

Autumn

symbolises old age: the leaves on the trees turn golden brown, preparing to fall.

Summer

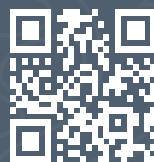
symbolises adulthood: each maturity - plants and animals are in full bloom.

Winter

represents death: all the trees are bare and all plant life is essentially dead.

[Download course content](#)

Questions?
Email support@century.tech



CENTURY