

Course Mapping Guide

Initial Teacher Training

About CENTURY

CENTURY is a learning platform that uses artificial intelligence to personalise learning for every learner. We have English, maths and science content for primary and secondary, alongside KS4 courses for geography and PE.

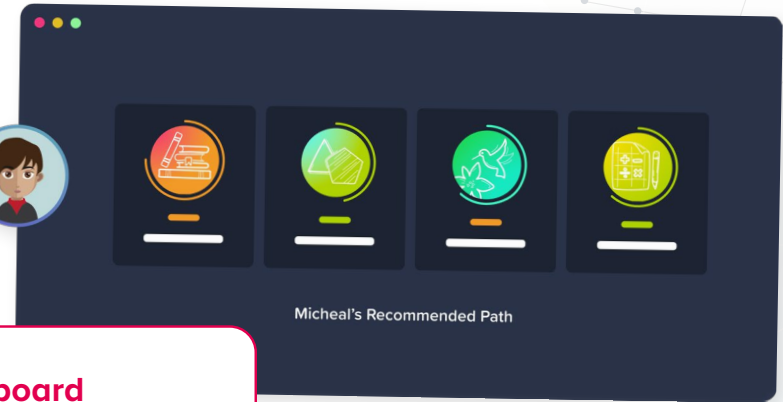
- ✓ Initial diagnostics ensure trainees have the required levels of English and maths with accompanying resources to plug any gaps.
- ✓ Trainees can upskill in key concepts using CENTURY's resources for support.
- ✓ Trainees can save valuable hours sourcing resources by using CENTURY's high-quality videos and slides in their lesson planning. The assessment questions can support trainees in their sequencing of a lesson.

“ *The beauty of CENTURY is that it doesn't just assess trainees, it also gives them individualised teaching and the tools needed to move forward.*

*Phil Page, Course Leader
Inspiring Leaders SCITT*



How can ITT organisations use **CENTURY**?



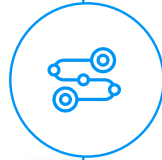
Assess fundamental skills

CENTURY's skills checks ensure trainees have the required literacy and numeracy skills. Accompanying resources enable trainees to address their specific needs.



Tutor Dashboard

Use the Markbook to monitor individual trainees and whole-class trends with a range of dashboards.



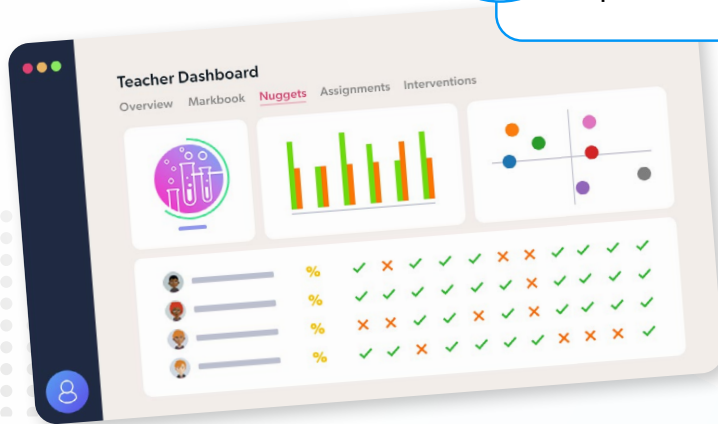
Recommended Path

This constantly adapting personalised pathway contains micro-lessons designed to address gaps in knowledge, provide stretch and challenge and promote long-term memory retention.



Self-directed Learning

Trainees can identify their own strengths and areas for improvement and work independently alongside their subject studies.



Automated Marking

Tutors can view data in real time, to help quickly identify which trainees require additional support or further stretch.



Want to see this in action?

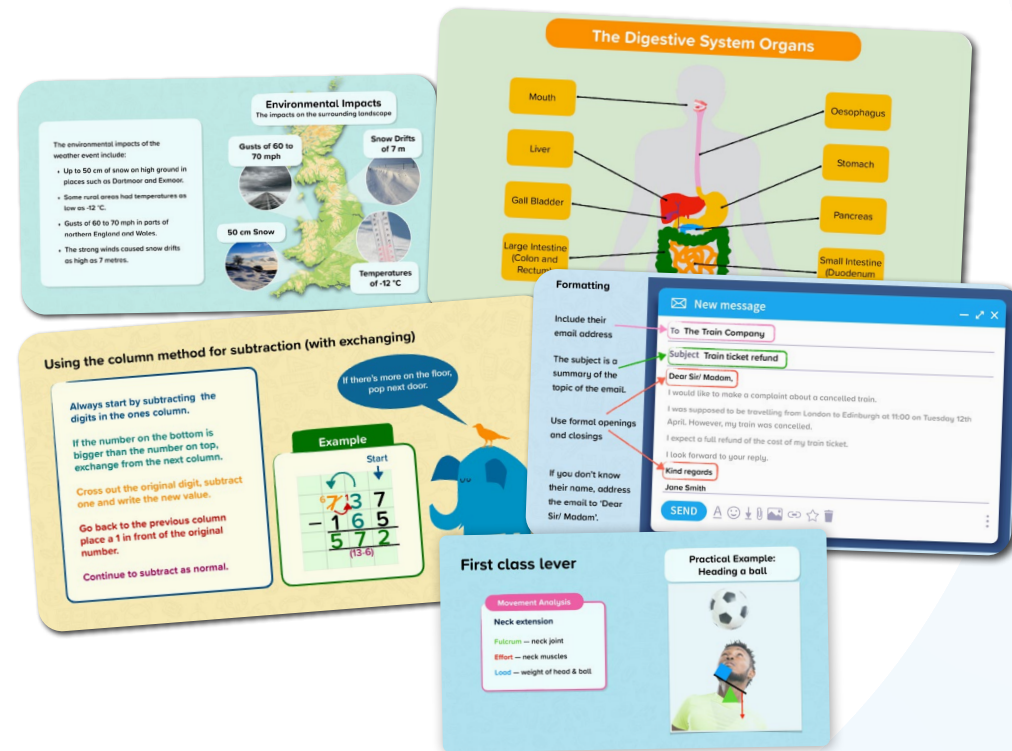
Watch a CENTURY platform walkthrough

How can **CENTURY** support subject knowledge enhancement?

We have English, maths and science content for primary and secondary, alongside KS4 courses for geography and PE.

Trainees can:

- ✓ improve their subject knowledge and understanding of pedagogy by accessing our videos, slides and assessment questions, all made by experienced teachers.
- ✓ understand how to best sequence a lesson using our assessment questions that build in complexity.
- ✓ save valuable hours sourcing resources by using CENTURY's high-quality videos and slides in their lesson planning.



ITT Courses

The English and Maths Fundamentals Assessments allow ITT providers to efficiently assess the literacy and numeracy skills of their cohorts of trainee teachers.



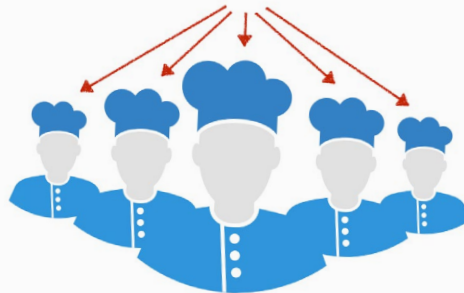
English & Maths Fundamentals Assessments

Last month Anna earned £568.
In that month she spent £123 on food and £56 on shopping clothes.
In mid-month she received £60 from her parents.
At the end of the month she saved what was left.
How much could she save in last month?

£ _____

You do not need to include units in your answer.

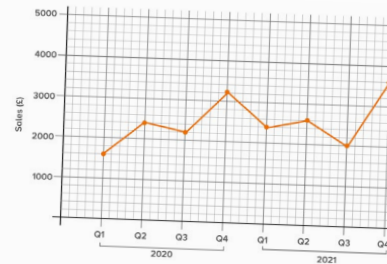
Look at the picture.



Select the phrase below that correctly describes what is highlighted in the picture.

Listen to the sentence and fill in the blank in the space below. (Remember, words can change form based on their role in the sentence)

She _____ t  fts with a smile.



This graph shows the total sales for a company in the four quarters of 2020 and 2021.
What were the total sales in all four quarters in 2020?

£ _____

ITT Courses

The Fundamentals courses provide the opportunities for trainee teachers to upskill towards the assessments. The Skills Checks diagnostics enable independent learning.



English Fundamentals



Maths Fundamentals

Some students conducted a survey of the types of household waste generated from buying the same 30 items from different supermarkets.

Supermarket	Plastic	Paper	Metal	Compostable
Smartprice	10	35	15	10
Rightprice	5	40	15	10
Bargain	5	45	15	10

a) Which supermarket had the most paper waste?
Use the key to identify that paper waste is represented by the green part of the bar.
A Rightprice

b) What is the average amount of compostable waste?
We find the average by adding together and then dividing by how many. Note that each small square on the graph represents 2%.
Smartprice = 12%
Rightprice = 10%
Bargain = 10%
B

Q Multiply the following:

a) $-4 \times 8 = -32$
'-4' and '8' have opposite signs so the answer is negative.

b) $-9 \times -6 = 54$
'-9' and '-6' are both negative so the answer is positive.

c) $3 \times -7 = -21$
'3' and '-7' have opposite signs so the answer is negative.

d) $-5 \times 2 \times -3 = 30$
We first multiply two of the numbers, for example the first two. This is now (-10×-3) . These are both negative numbers so the answer is positive.

5 Stationery or Stationery

	Definition	In a sentence	Spelling Tip
Stationary	Not moving or not intending to be moved.	The traffic was stationary .	Parked cars are stationary .
Stationery	Pens, paper and other office materials.	He was in charge of ordering the stationery for the office.	Pens are a type of stationery .

Questions?
Email support@century.tech

