

Course Mapping Guide

Primary English

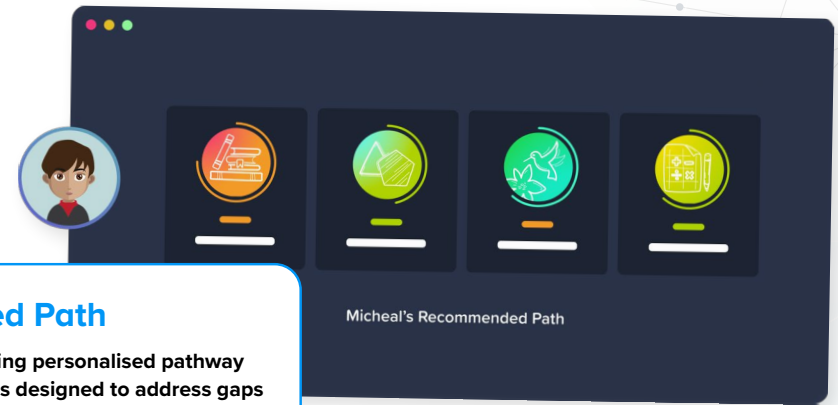
About CENTURY

CENTURY is a learning platform that uses artificial intelligence to personalise learning for every learner. Our team of experienced teachers have created all of our content for English, maths, science, geography and physical education from years 2 to 11, as well as functional skills content for post-16 learners. All courses are aligned to the national curriculum and national standards.

- ✓ Learning materials and questions for primary, secondary and post-16 learners
- ✓ Tailored to each learner's skills and knowledge
- ✓ Powered by the world's leading adaptive learning platform
- ✓ Web-based learning for tablets, laptops and desktops



How does CENTURY work?



Diagnostics

Learners begin by completing diagnostics that quickly identify knowledge gaps and misconceptions, and help CENTURY recommend the best learning materials for each individual learner.

Recommended Path

This constantly adapting personalised pathway contains micro-lessons designed to address gaps in knowledge, provide stretch and challenge and promote long-term memory retention.

Leadership Dashboard

Senior and middle leaders get an overview of performance and engagement on a subject, class and learner level.

Achievements

Learners get rewarded with badges and streaks for completing micro-lessons or for using CENTURY over a certain period of time to increase their motivation and engagement.

Automated Marking

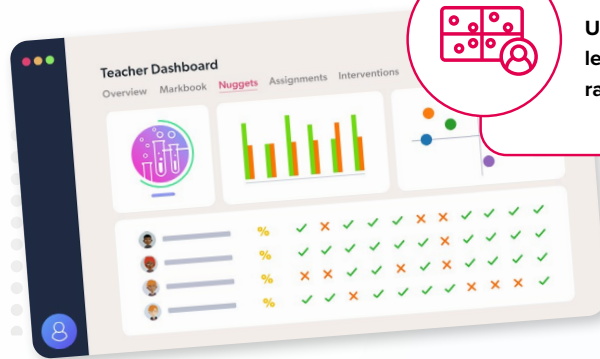
Teachers can view data in real time, to help quickly identify which learners require additional support or further stretch.

Teacher Dashboard

Use the markbook to monitor individual learners and whole-class trends with a range of dashboards.

Learner Dashboard & Guardian Portal

Learners can identify their strengths and areas for improvement. Parents and guardians can monitor their learner's progress, completed work, and see work set.



Primary English Course Mapping



Want to see this in action?

Watch a CENTURY platform walkthrough

TeacherGENie™

Making generative AI work for teachers

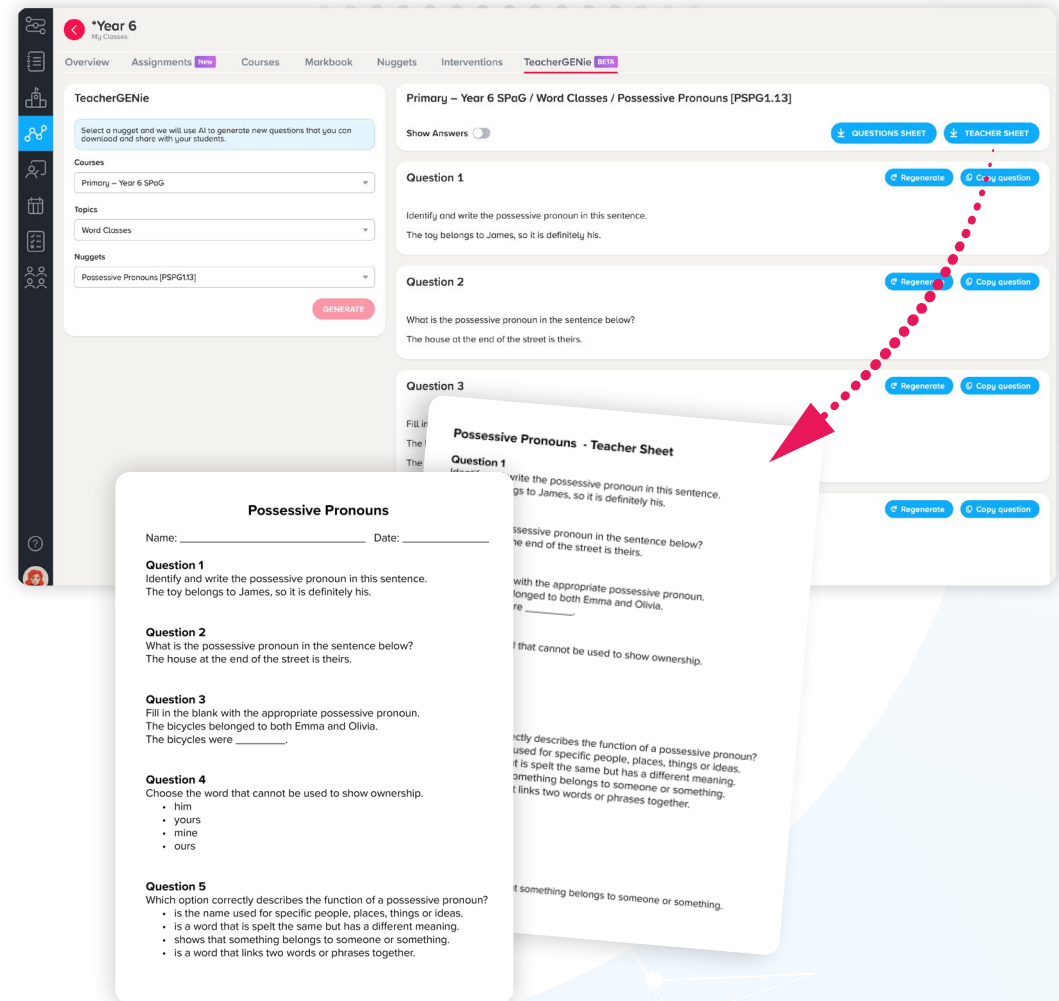
CENTURY has always led the way in embedding AI into education through our teaching and learning platform. TeacherGENie™ goes beyond using generative AI alone, as we know the true value of these tools can only be realised when they are combined with quality, teacher-made resources.

These worksheets, consisting of five questions, can be used:

- ✓ in class as a starter to assess prior knowledge,
- ✓ as a plenary to check learning,
- ✓ as part of home learning,
- ✓ as a great revision tool in the run up to exams.

With the 'Copy question' button, you can easily copy and paste the generated content to use elsewhere.

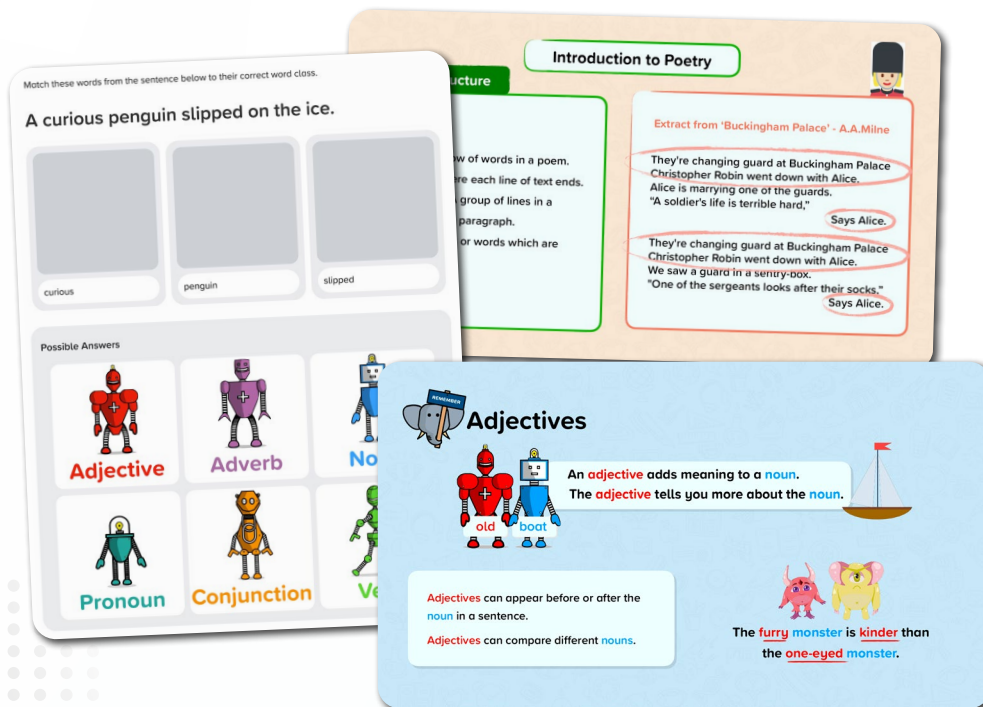
By grounding generative AI in expertly crafted learning resources, we're making sure that tools such as TeacherGENie™ deliver meaningful, classroom-ready materials that genuinely support teaching goals.



English Courses

Primary SPaG

Our primary English offering includes both SPaG and reading courses for years 2 to 6. There is a specific SPaG course for each year group, but they also include prerequisite learning from previous years.



Year 2 SPaG



Year 3 SPaG



Year 4 SPaG



Year 5 SPaG



Year 6 SPaG

[Download course content](#)

English Courses

Primary Reading

We have a reading comprehension course for years 3 and 4, as well as a separate reading course for years 5 and 6 which focuses on specific reading skills.



Year 3-4 Reading Comprehension



Year 5-6 Reading

Life Cycles of Plants and Animals

Butterflies don't start life as the beautiful winged creatures we all think of. They start life as an egg like many other insects, laid by an adult female butterfly. You can actually see the tiny caterpillar inside the egg of some species from this egg hatches a caterpillar, which is an eating machine! They spend most of their time eating in order to gain strength for the next phase. In fact, they normally eat the whole leaf of their time eating in order to gain strength for the next phase. When they have reached their full size, they form themselves into a chrysalis, also known as a pupa. Inside their chrysalis, the caterpillar undergoes a complete transformation. It grows wings, new organs and then emerges fully formed as an adult butterfly.

Which statement includes two events?

- ☐ Caterpillars form themselves into a chrysalis. They then emerge as butterflies.
- ☐ From this egg hatches a caterpillar. Caterpillars are eating most of their time eating.
- ☐ They start life as an egg like many other insects. They are laid by a female butterfly.
- ☐ Inside their chrysalis, the caterpillar undergoes a complete transformation.

YOUR TURN

Q Which word is a synonym of 'enchanted' in this sentence?

Everyone agreed that they were **enchanted** children. One had a bad word to say about them!

Naughty

Clever

Oliver balanced on the edge of his track. He reached around Henry's leg and pulled as hard as he could. Together, they wrestled one foot and then the other out of the thick mud. Henry was free.

Now for the bike. Henry took off his jacket and tied it around the back wheel. Using all their strength, the boys pulled hard and slowly freed the bike. Cold, tired, and caked in mud, the boys slowly wheeled the bike back over the track.

Henry and Oliver woke up early and ran downstairs to have their breakfast. The boys had heard about a new cycle track in the woods. They couldn't wait to try it out. They were so excited that they hadn't noticed it was raining. Outside, it was gushing down.

"We can't go out in this weather," said their mum. "It's far too wet. You'll have to wait until later."

"OK," said the boys. "We'll wait."

What were the boys excited about?

- ☐ playing in the rain
- ☐ trying out the new bike track
- ☒ waking up early
- ☐ eating their breakfast

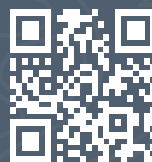
Incorrect

This was not the reason that they were excited. Read the first paragraph carefully.

Correct Answer

NEXT QUESTION

Questions?
Email support@century.tech



CENTURY