

Course Mapping Guide

Secondary English

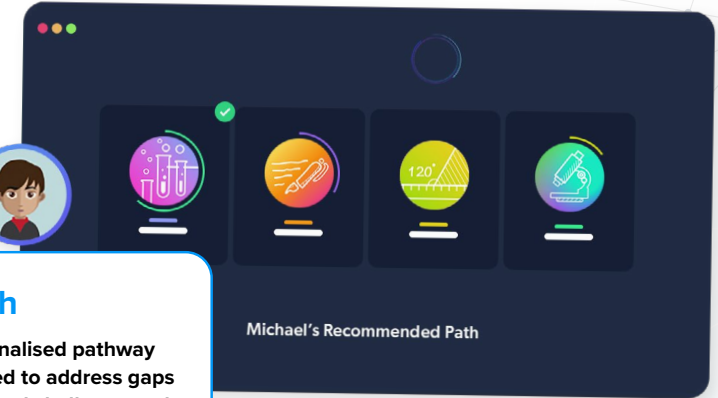
About CENTURY

CENTURY is a learning platform that uses artificial intelligence to personalise learning for every learner. Our team of experienced teachers have created all of our content for English, maths, science, geography and physical education from years 2 to 11, as well as functional skills content for post-16 learners. All courses are aligned to the national curriculum and national standards.

- ✓ Learning materials and questions for primary, secondary and post-16 learners
- ✓ Tailored to each learner's skills and knowledge
- ✓ Powered by the world's leading adaptive learning platform
- ✓ Web-based learning for tablets, laptops and desktops



How does CENTURY work?



Diagnostics

Learners begin by completing diagnostics that quickly identify knowledge gaps and misconceptions, and help CENTURY recommend the best learning materials for each individual learner.

Recommended Path

This constantly adapting personalised pathway contains micro-lessons designed to address gaps in knowledge, provide stretch and challenge and promote long-term memory retention.

Leadership Dashboard

Senior and middle leaders get an overview of performance and engagement on a subject, class and learner level.

Achievements

Learners get rewarded with badges and streaks for completing micro-lessons or for using CENTURY over a certain period of time to increase their motivation and engagement.

Automated Marking

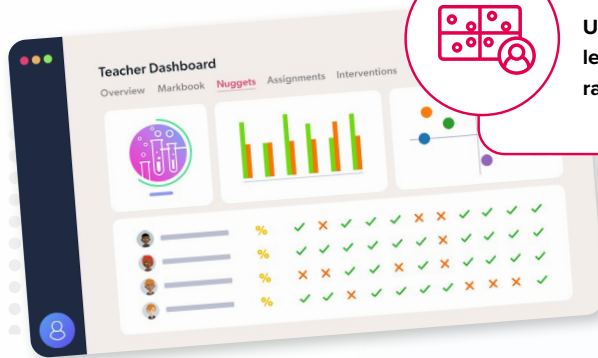
Teachers can view data in real time, to help quickly identify which learners require additional support or further stretch.

Teacher Dashboard

Use the markbook to monitor individual learners and whole-class trends with a range of dashboards.

Learner Dashboard & Guardian Portal

Learners can identify their strengths and areas for improvement. Parents and guardians can monitor their learner's progress, completed work, and see work set.



Secondary English Course Mapping



Want to see this in action?

Watch a CENTURY platform walkthrough

TeacherGENie™

Making generative AI work for teachers

CENTURY has always led the way in embedding AI into education through our teaching and learning platform. TeacherGENie™ goes beyond using generative AI alone, as we know the true value of these tools can only be realised when they are combined with quality, teacher-made resources.

These worksheets, consisting of five questions, can be used:

- ✓ in class as a starter to assess prior knowledge,
- ✓ as a plenary to check learning,
- ✓ as part of home learning,
- ✓ as a great revision tool in the run up to exams.

With the 'Copy question' button, you can easily copy and paste the generated content to use elsewhere.

By grounding generative AI in expertly crafted learning resources, we're making sure that tools such as TeacherGENie™ deliver meaningful, classroom-ready materials that genuinely support teaching goals.

The screenshot displays the TeacherGENie interface for a Year 6 class. The left sidebar shows navigation options: Overview, Assignments, Courses, Markbook, Nuggets, Interventions, and TeacherGENie (highlighted). The main content area shows a worksheet titled 'Primary - Year 6 SPaG / Word Classes / Possessive Pronouns [PSPG1.13]'. It includes a 'Show Answers' toggle and buttons for 'QUESTIONS SHEET' and 'TEACHER SHEET'. The worksheet contains five questions related to possessive pronouns. A red arrow points from the 'Copy question' button next to Question 1 to a separate sheet titled 'Possessive Pronouns - Teacher Sheet'. This sheet contains the same five questions, each with a 'Name:' and 'Date:' field. The questions are:

- Question 1**
Identify and write the possessive pronoun in this sentence.
The toy belongs to James, so it is definitely his.
- Question 2**
What is the possessive pronoun in the sentence below?
The house at the end of the street is theirs.
- Question 3**
Fill in the blank with the appropriate possessive pronoun.
The bicycles belonged to both Emma and Olivia.
The bicycles were _____.
- Question 4**
Choose the word that cannot be used to show ownership.
• him
• yours
• mine
• ours
- Question 5**
Which option correctly describes the function of a possessive pronoun?
• is the name used for specific people, places, things or ideas.
• is a word that is spelt the same but has a different meaning.
• shows that something belongs to someone or something.
• is a word that links two words or phrases together.

English Courses

Secondary English Language KS3

Our KS3 English Language courses cover reading and writing skills across both fiction and non-fiction, including language, structure, analysis, text types and writing for purpose.



English Language KS3



English SPaG Secondary

The collage features several educational materials:

- Structuring your writing**: A worksheet with bullet points: "Use a range of sentence structures and sentence lengths." and "Use paragraphs to organise your writing." It includes a sample letter to "Dear Sir/ Madam," about applying for a job at "The Cafe on Saturdays," with words like "Firstly," "Secondly," and "I am a very confident" circled.
- Comparatives and Superlatives**: A worksheet explaining that comparatives compare two things and superlatives compare one thing with everything else. It includes examples: "Jane is taller than John," "She is the best sister!" and "He is more intelligent than they first thought." It also has a "Did you know?" section about adjective forms.
- The four seasons can symbolise different stages of life:**: A worksheet with illustrations and descriptions for Spring (childhood), Summer (adulthood), Autumn (old age), and Winter (death).
- Quiz Interface**: A pop-up window titled "Choose the simile below." with four options. The third option, "There was a blanket of fog in the sky," is marked with a red 'X' and labeled "Incorrect." Below it, a message explains: "No, this is a metaphor, not a simile. Remember to look out for the words 'like' and 'as' when deciding if a sentence includes a simile!" A "correct answer" is indicated, and a "NEXT QUESTION" button is at the bottom.

Download course content

English Courses

Secondary Reading

These courses contain a selection of extracts taken from a range of texts, followed by reading questions which assess skills such as comprehension, inference, and analysing language and structure devices.

The Body Snatchers

By Robert Louis Stevenson

This is an extract from 'The Body Snatchers', a short story written in 1885 by Robert Louis Stevenson. It tells the story of two men, Macfarlane and Fettes, who are body snatchers - people who steal the corpses of people who have recently died from their graves. They would then use these bodies to universities for dissection and other medical research. At the time the story was written, body snatching was a crime punishable by imprisonment.

It was by this time growing somewhat late. The gig, according to order, was brought round the door with both lamps brightly shining, and the young men had to pay their bill and take their hats. They entered the house, and the young men, having paid their bill, returned upon their way. They entered the house, and the young men, having paid their bill, returned upon their way. They entered the house, and the young men, having paid their bill, returned upon their way.

Label each image with the correct word or phrase from the extract. You can use a dictionary to help you.

moorland fertile country draped in ivy

Which image most accurately matches the description of Sleepy Hollow?

A B C D

Match each part of this image to the correct quotation.



Reading: Fiction & Nonfiction



Reading: Gothic Fiction



Reading: 19th Century Fiction



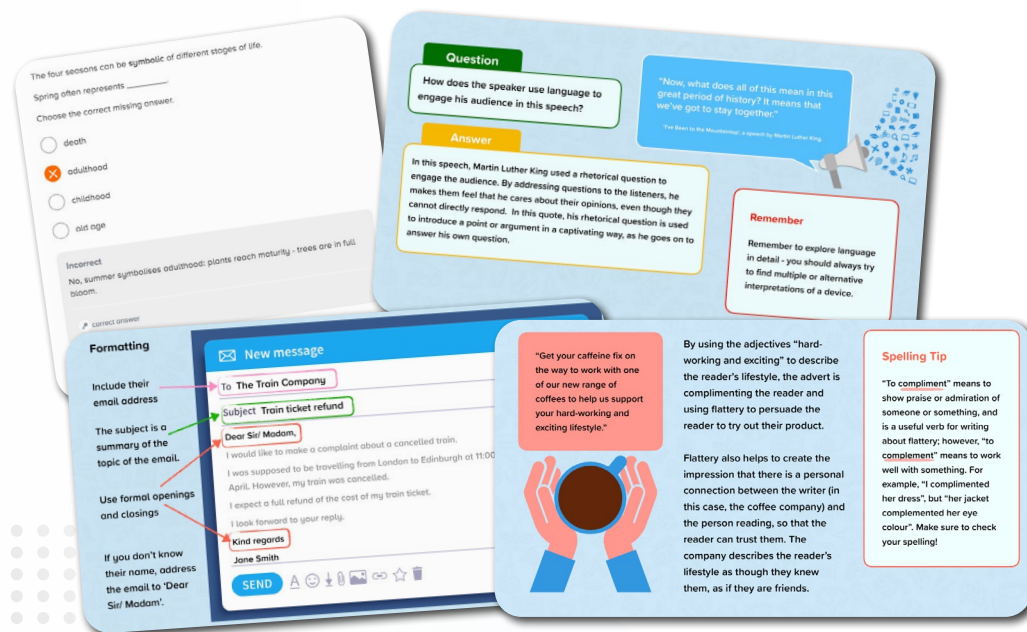
Reading: Children's Classics

[Download course content](#)

English Courses

Secondary English Language GCSE

Our GCSE English Language courses cover reading and writing skills across both fiction and non-fiction, including language, structure, analysis, text types and writing for purpose.



English Language GCSE: Eduqas

Specification: C700QS



English Language GCSE



English Language GCSE: AQA

Specification: 8700



English Language GCSE: Edexcel

Specification: 1EN0



English SPaG GCSE

[Download course content](#)

English Courses

Secondary English Language IGCSE

Our IGCSE English Language courses cover reading and writing skills across both fiction and non-fiction, including language, structure, analysis, text types and writing for purpose.



English Language IGCSE: Cambridge

Specification: 500



English Language IGCSE: Edexcel A

Specification: 4EA1



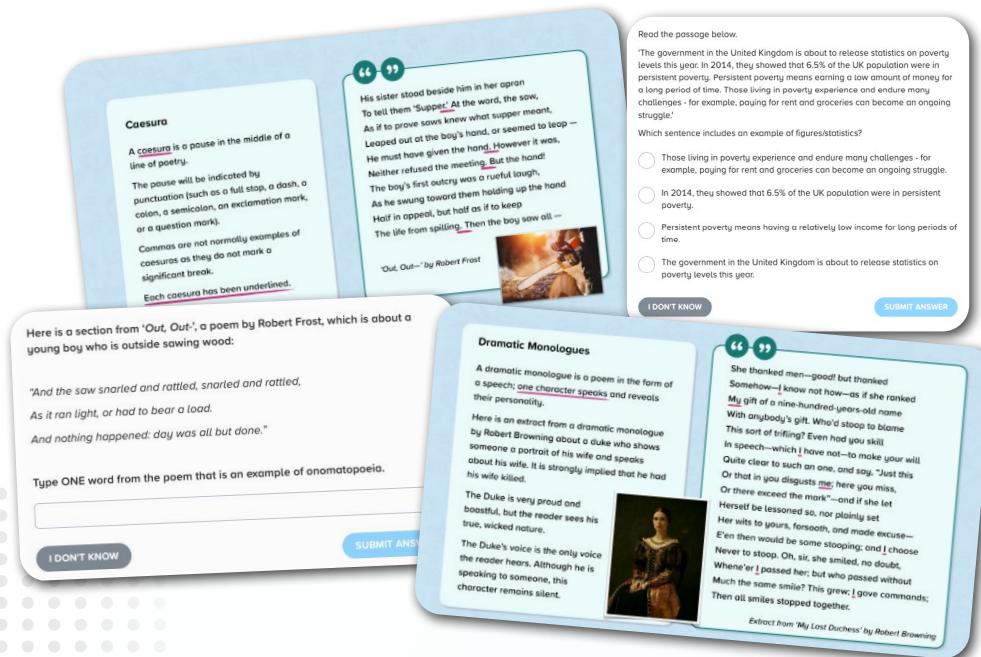
English Language IGCSE: Edexcel B

Specification: 4EB1



English Second Language IGCSE: Cambridge

Specification: 0510/0511



[Download course content](#)

English Courses

Secondary Literature - 19th-century Novels

Our literature courses explore plot, characters, themes, context, language, structure, form, and are suitable for all exam boards.



Literature: A Christmas Carol



Literature: Jekyll and Hyde



Literature: The Sign of the Four

[Download course content](#)

English Courses

Secondary Literature - Shakespeare

Our literature courses explore plot, characters, themes, context, language, structure, form, and are suitable for all exam boards.



Literature:
A Midsummer Night's Dream



Literature: Macbeth



Literature: Much Ado About Nothing



Literature: Romeo and Juliet

[Download course content](#)

English Courses

Secondary Literature - Modern Prose & Drama

Our literature courses explore plot, characters, themes, context, language, structure, form, and are suitable for all exam boards.



Literature: An Inspector Calls



Literature: Animal Farm

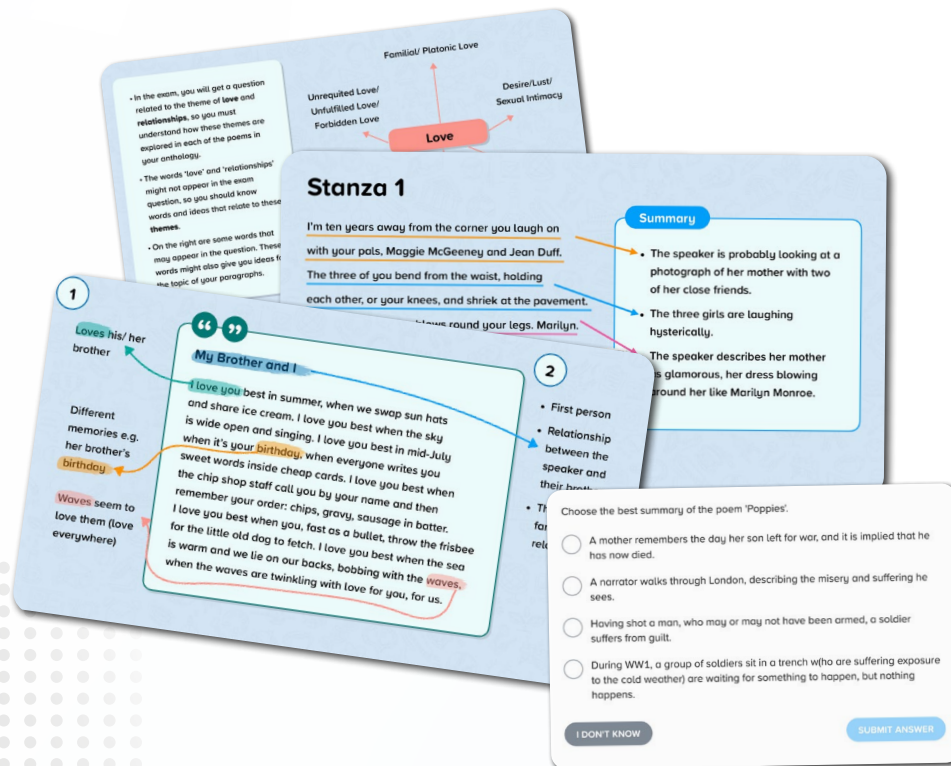


Literature: Blood Brothers

English Courses

Secondary Literature - Poetry

Our literature courses explore plot, characters, themes, context, language, structure, form, and are suitable for all exam boards.



Love and Relationships Poetry: AQA



Power & Conflict Poetry: AQA



Power & Conflict Poetry: Edexcel



Unseen Poetry

[Download course content](#)

English Courses

Functional Skills

Our functional skills courses cover the knowledge and skills required for the functional skills qualifications, mapped to the national requirements outlined by the DfE.

Similes

A simile is when you say one thing is like another. It is a comparison between the two things. It often includes the word 'like' or 'as'.

The ball flew into the sky like a rocket.

Rockets go high into the sky very quickly.

This simile suggests that the ball went upwards very quickly.

Question

What is the main point of this text?

Read this text and identify what the key words are.

Which of these sentences is a simile?

- ☐ She was fishing for compliments.
- ☐ He was as brave as a lion.
- ☐ Lions are powerful and majestic.
- ☐ He was the apple of her eye.

I DON'T KNOW SUBMIT ANSWER



English Functional Skills (Entry 1)



English Functional Skills (Entry 2)



English Functional Skills (Entry 3)



English Functional Skills (Level 1)



English Functional Skills (Level 2)

[Download course content](#)

Questions?
Email support@century.tech

